

Corey Marsh

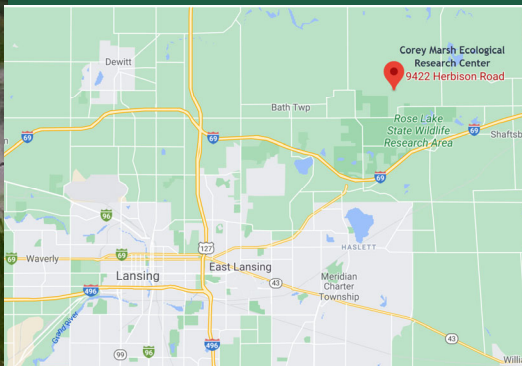
Established in 2018, Michigan State University's Corey Marsh Ecological Research Center (CMERC) was founded to serve as a center for long-term research in wetland and prairie ecosystem science. This 320 acre property, has been a part of MSU since 1858 and was the home of Muck Soils Research Farm for over 70 years from 1941—2012.



The center has 3 core, interdependent purposes—research, engagement, and training. Ecological research is conducted by highly integrated and interactive teams, and is the foundation for engaging our community in scientific discovery. These research and outreach activities serve as a platform for training university students in field-based research and science communication and engagement.



With community engagement an important part of our vision, we maintain trails that are open for the public to enjoy the incredible diversity of flora and fauna and the peace that Corey Marsh has to offer. Please walk out toward the middle, stop and listen and revel in the nature's beauty.



AgBioResearch
MICHIGAN STATE UNIVERSITY

Corey Marsh Ecological Research Center
9422 East Herbison Road
Laingsburg, MI 48844

Facebook Web address: <https://www.canr.msu.edu/cmernc/>
E-mail: abr.cmernc@msu.edu Facebook:
<https://www.facebook.com/ABR.CMERNC/>

Corey Marsh Ecological Research Center

Trail Map & Information



Open to the public, MSU's Corey Marsh is 320 acres of open prairie and wetlands near Bath, Michigan. Enjoy the beauty of the marsh, abundant wildlife, and the over 3.5 miles of trails for walking, skiing and snowshoeing.

TRAILS

Distance between black points is shown on the map

- Center (green) trail—0.3 mi
- Main loop (yellow)—1.5 mi
- North pond spur (red)—0.2 mi
- Woodland (orange) trail—0.35 mi
- South loop (purple)—0.55 mi
- West loop (blue)—0.76 (finished; 0.5 mi unfinished)

IMPORTANT INFO

Safety & Rules

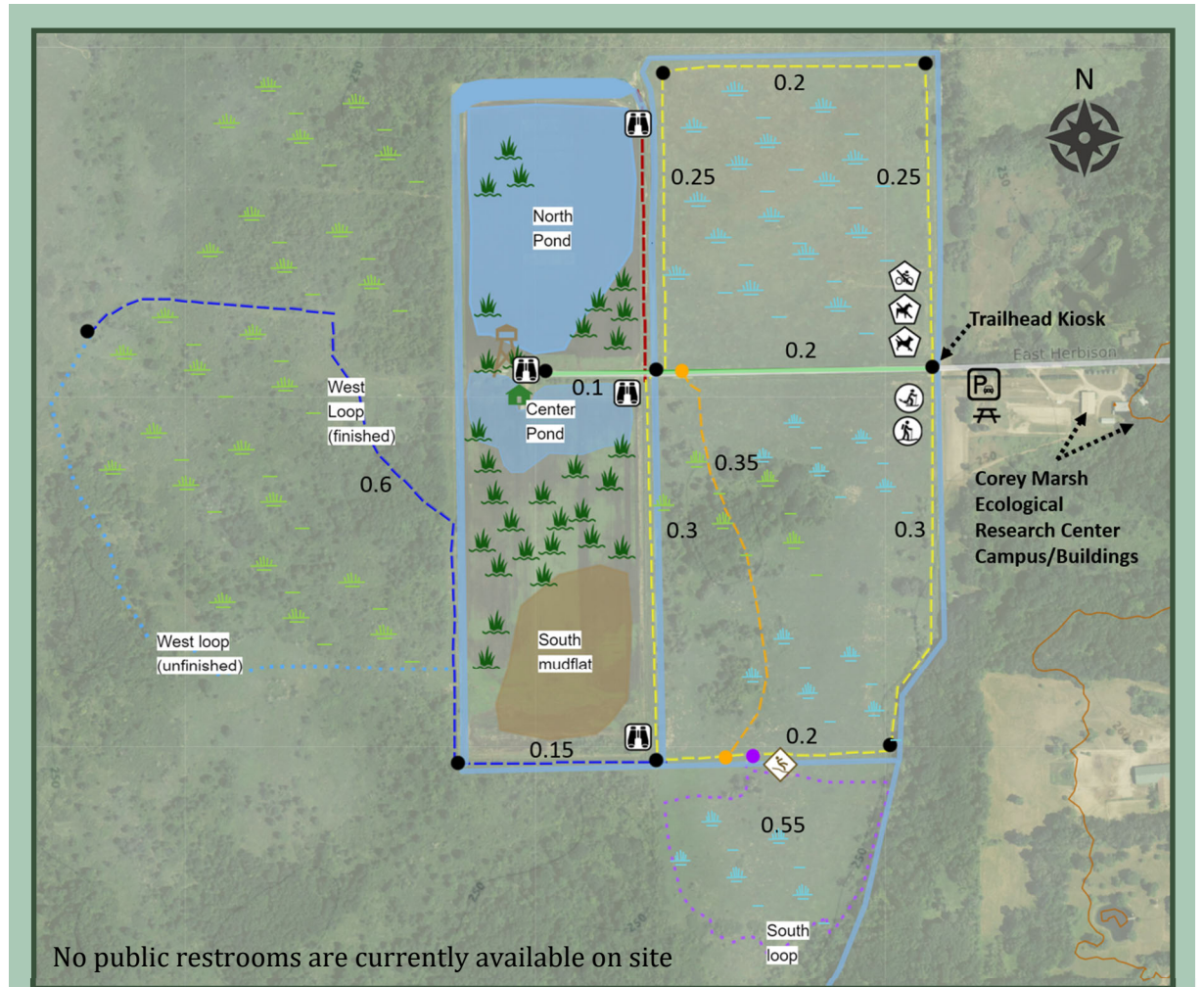
Please respect our active research and do not interfere with field equipment.

Please note that the northern section of the main (yellow) loop can have standing water in the spring.

When snow is present, please do not walk or snowshoe in the ski tracks.

Under no circumstances are dogs, horses, bikes, motorized vehicles allowed past the entrance gate.

No hunting, firearms, or weapons are allowed on MSU property



No public restrooms are currently available on site

	Walking/Snowshoeing		No dogs		Parking area
	Cross-country skiing		No horses		Picnic area
	Observation area		No bikes		Wheelchair accessible trail (planned**)
	Bridge hazard		No motorized vehicles		Observation blind/tower (planned**)

All upkeep and improvements to the trail system are supported through private donations. Please consider providing your financial support - click on the QR code to make a donation.

** We are currently fund-raising for two projects a/an (1) ADA accessible center trail (green) and (2) observation/blind tower

