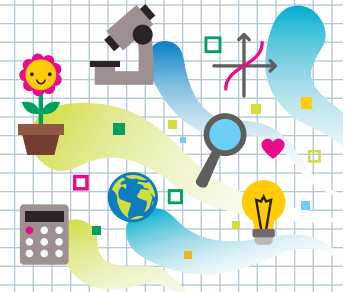




HEADS IN, HEARTS IN

A Drop of Blood

Instructions for Set-Up



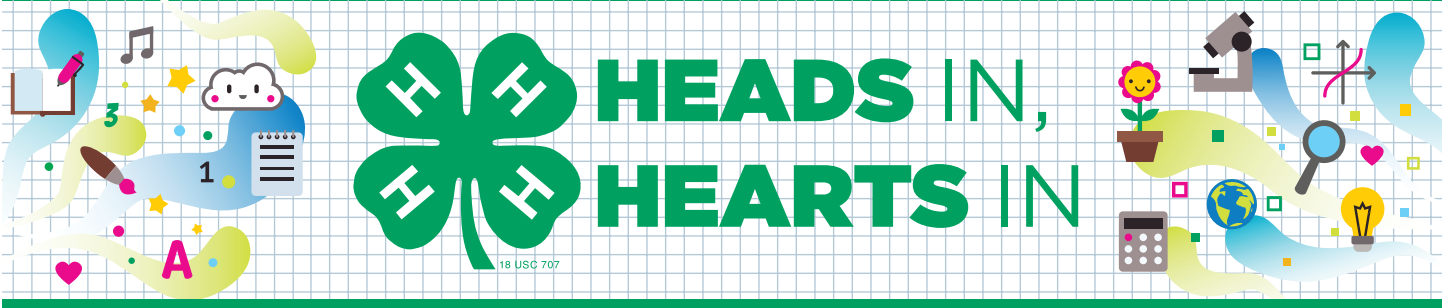
Supplies

- “Guide for Families” handout
- Clear plastic standup display (optional)
- “Blood in an Artery” handout
- Clear ½-gallon sealable container
- Corn syrup
- Red cinnamon candies
- Dry lima beans
- Lentils
- Display table

Activity Preparation

- ▶ Purchase or locate items on supply list.
- ▶ Print one copy of the “Guide for Families” handout. Laminate or place in a clear plastic standup display to allow participants to see it more readily.
- ▶ Print one copy of “Blood in an Artery” handout in color. Laminate.
- ▶ Pour corn syrup, red cinnamon candies, lima beans and lentils into the clear ½-gallon sealable container.
- ▶ Set up the display table and arrange needed supplies.





A Drop of Blood

Guide for Families

Learning Objectives

What you need to know:

There are four parts of blood:

- ▶ Plasma
- ▶ Red blood cells
- ▶ White blood cells
- ▶ Platelets

Blood is very important to our bodies. A child weighing 80 pounds has about 3/4 gallon of blood in his or her body. Each component of blood plays an important role. **Plasma** is the clear portion of the blood. **Red blood cells** deliver oxygen from the lungs to the tissues and organs in the body. **White blood cells** help defend the body against disease and infections. **Platelets** help blood to clot when there is a cut.

What you will do and learn:

In this activity, you will look at a model of a drop of blood and a picture that shows the parts of blood labeled. Using the picture, you will identify the four parts of blood in the model.

Instructions

1. Look at the model of a drop of blood in the container and the picture of blood in an artery. What do you notice? What do you think our blood does?
2. Look at the four separate parts: plasma, red blood cells, white blood cells and platelets.
3. Looking in the container, which part do you think is the plasma? Red blood cells? White blood cells? Platelets? (See the answers below.)

Answers:

1. Plasma (corn syrup)
2. Red blood cells (red cinnamon candies)
3. White blood cells (dry lima beans)
4. Platelets (lentils)

This activity is adapted from Creekside Learning. (2011, February 24). *More kitchen science: What's inside a drop of blood?* Retrieved from http://creeksidelearning.com/more-kitchen-science-whats-inside-a-drop-of-blood/#_a5y_p=2079624

A Drop of Blood

Blood in an Artery Handout

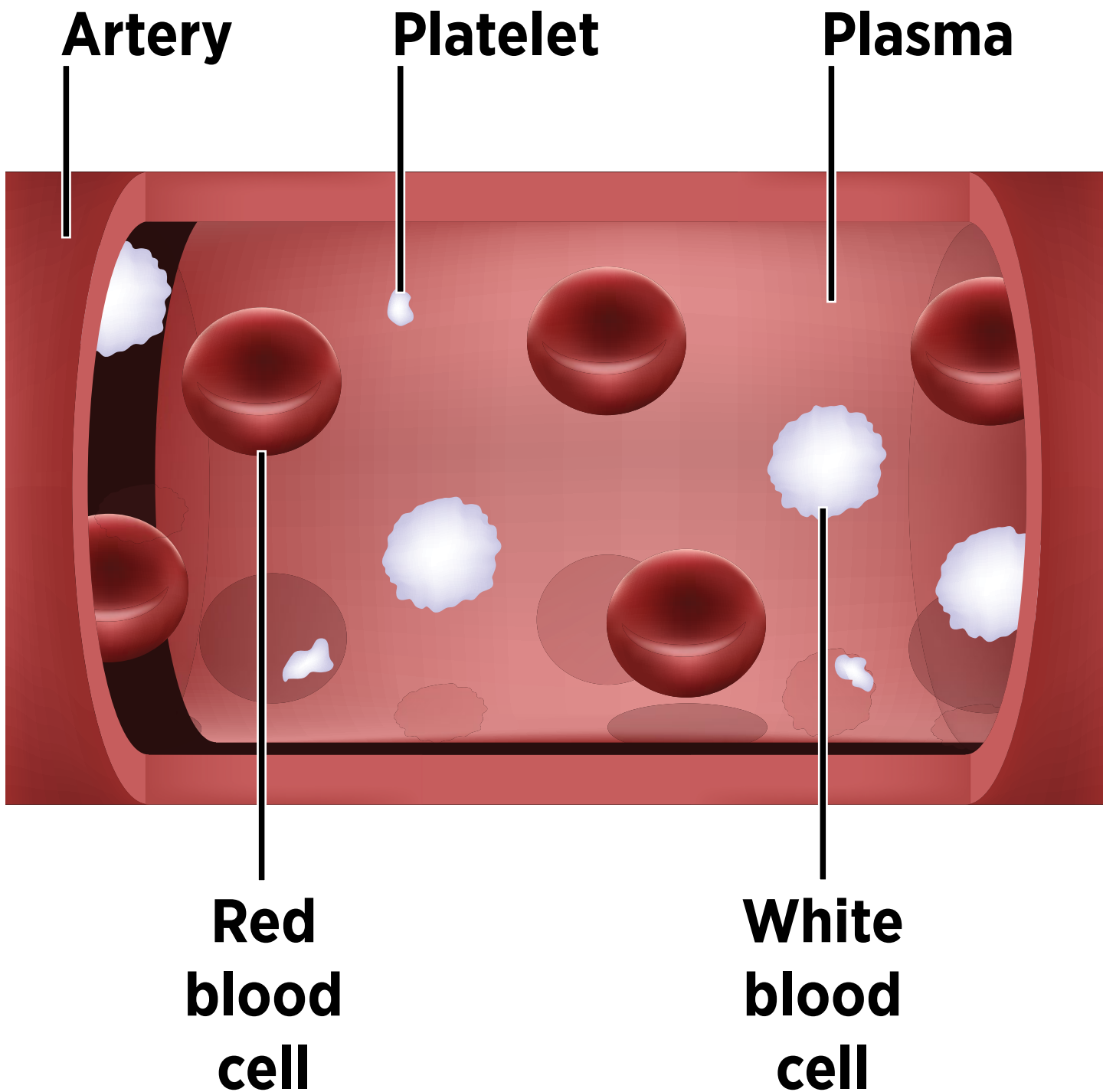


Illustration © iStock.com/Mhaprang