



**FINDING FUNDING FOR RESEARCH  
WITH AFRICAN PARTNERS  
AND FACULTY NETWORKING**

**T. S. JAYNE**

**Office of International Research Collaboration  
Alliance for African Partnership  
February 20, 2018**

A stylized world map composed of colorful, low-poly geometric shapes. The map is centered on the Atlantic Ocean, with North America on the left, South America at the bottom left, Europe and Africa in the center, and Asia and Australia on the right. The colors used include shades of blue, purple, green, orange, and yellow. The text "OVERVIEW AND CONTEXT" is overlaid in the center of the map.

# OVERVIEW AND CONTEXT

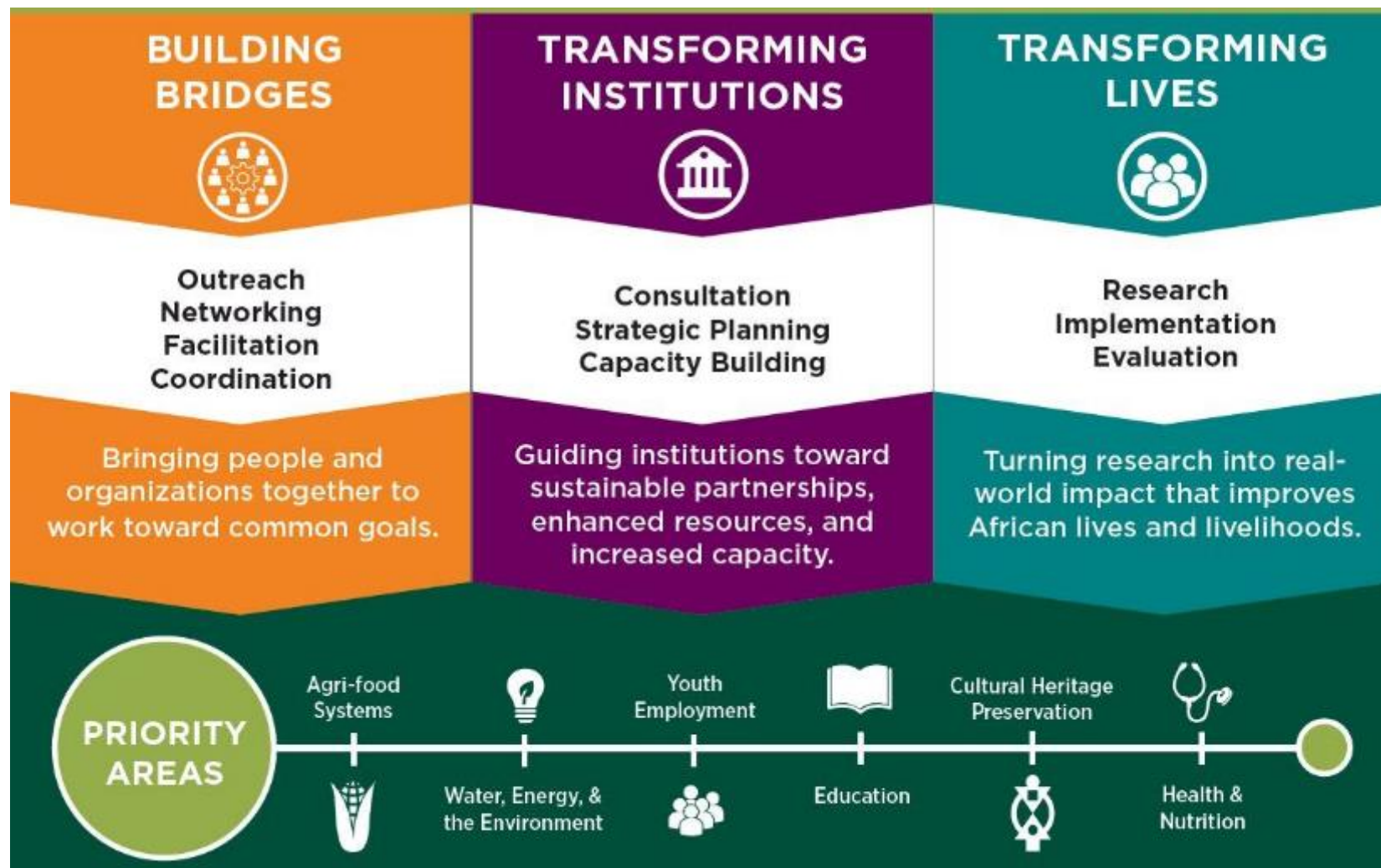
# ISP STRATEGY



# MSU Thematic Strengths



# Alliance for African Partnership(AAP) Framework & Priority Areas





# AAP Vision & Mission

## Vision

- To transform lives through co-created initiatives that address shared challenges

## Mission

- To mobilize, promote and support innovative, sustainable and equitable long-term partnerships among African institutions, MSU and other collaborators



# Illustrative AAP Activities

- 2017 Grant Awards
- 2018 CFP – Fellowships for interdisciplinary research clusters
- Educational symposia and workshops co-sponsored with partners
- Dissemination of thought pieces and other materials/resources
- Strengthening engagement with pan-African organizations
- Established Africa-based Secretariat
- Mobilizing resources for grantee teams and partner research

# Upcoming AAP Opportunities

- **AAP Portal**
  - Tool for researcher information sharing and networking
  - Expected launch: May 2018
- **Strategic travel grants**
  - Capacity development partnerships
- **Town Hall meeting: April 25**
  - AAP fellowship proposals and other AAP opportunities





# Mobilizing Resources

- Introduction to resources for research: Federal Funding
- Strategies for identifying and applying for other resources
- Networking with other MSU faculty



# Office of International Research Collaboration (OIRC)

## Mandate

- Advance MSU's global research agenda
- Help faculty win research grants (foundation & federal)
- Specialize in **large, international, cross-college proposals**
- Focus on ISPs four thematic areas

## Approach:

- OIRC uses its knowledge of MSU faculty capacity and the donor landscape to provide **full-service, high-quality** proposal development.
- Work collaboratively with ISP Centers and Units and ISP Advancement

## Who we serve:

- MSU faculty across the university
- ISP centers, units, & affiliated faculty
- ISP Dean

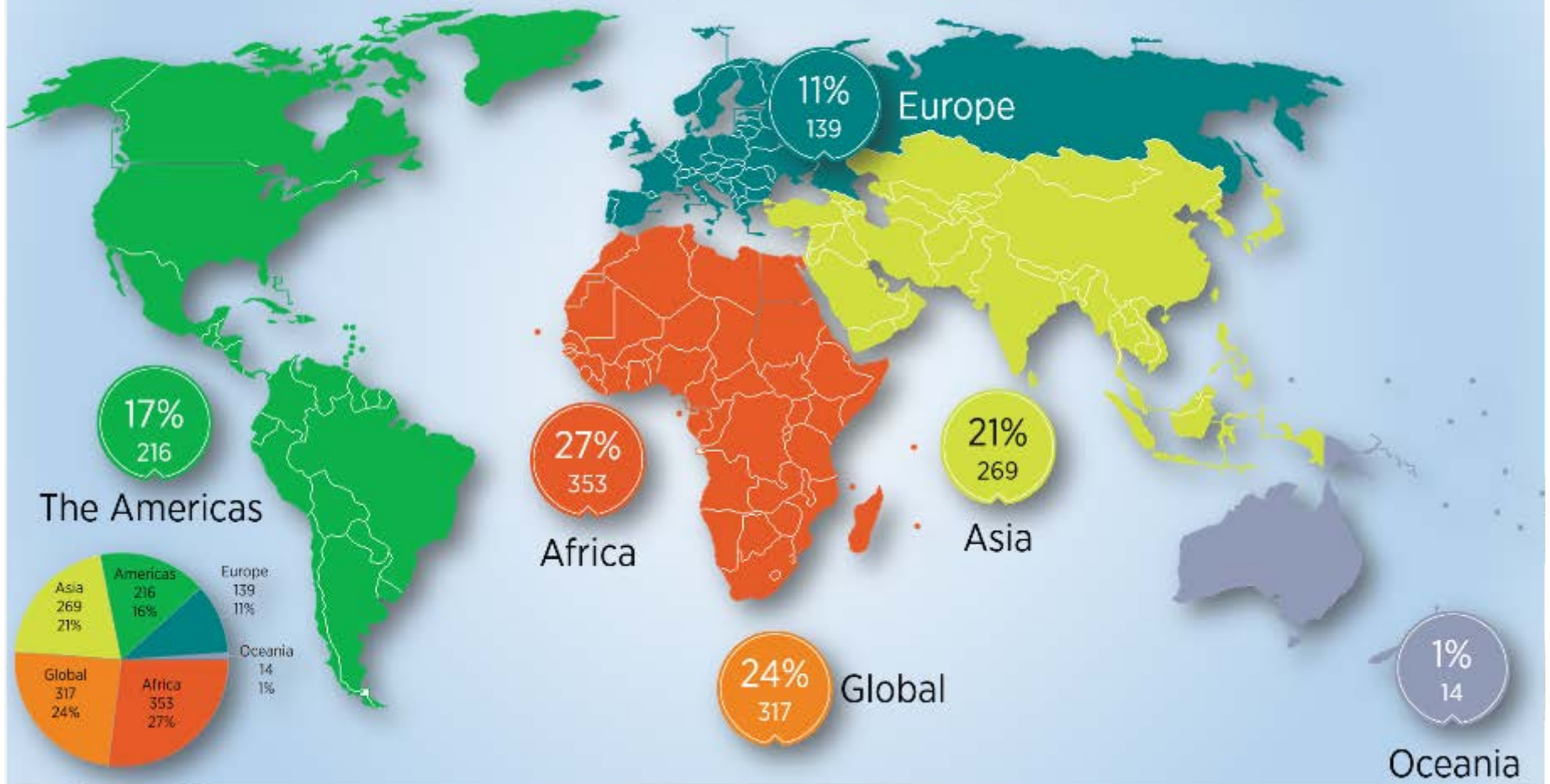


# OIRC Services

- Proposal Development
- Budget & Contract services
- Connections
- Market Intelligence
  - Weekly funding update

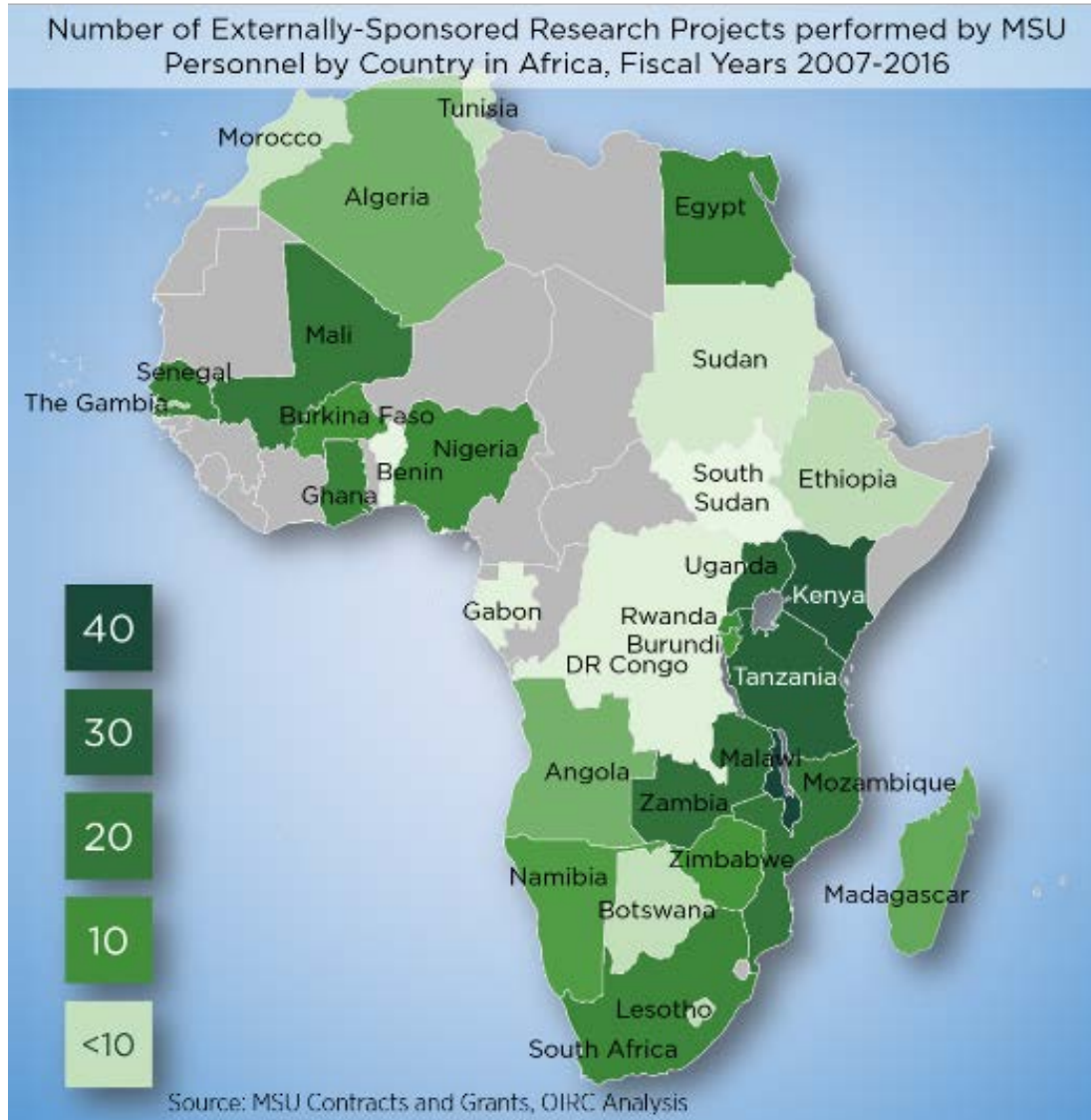


# External Sponsored Research by Region, FY2007-2016





# MSU Grants in Africa







# **DONOR TRENDS AND MARKET INTELLIGENCE**

# National Science Foundation (NSF)

## Mission

- To promote the progress of science; to advance the national health, prosperity, and welfare; and to secure the national defense.

## Types of work funded

- **Extramural, fundamental** research (no intramural research or applied/derivative research)
- Discovery-based research or education
- **Does not fund** capacity building or international researchers



# NSF: International Engagement

**Most international research and education activities are funded by NSF disciplinary programs:**

- As part of regular awards
- As supplements to regular awards

## **NSF Core Values for International Engagement**

- Intellectual partnerships and mutual benefit are clear
- U.S. students and junior researchers are engaged internationally
- Global networks linking expertise and resources are common

**Make the case for international work in your proposal!**

## Trends in NSF funds to MSU (for Africa work)

FY 2008-2017	NSF direct to MSU	MSU as sub-partner	TOTAL
# of Grants	26	4	30
\$ per Grant	\$12K - \$1.5M	\$8K - \$400K	\$8K - \$1.5M
# of countries	20 (and regional)	6 (and regional)	20

### Sample technical areas

- Dynamic Interactions among People, Livestock, and Ecosystems under Climate Change
- Social and Behavioral Dynamics
- Geology
- Animals (Communication, Hormones, Behavior, Ecology, Conservation, Disease)
- Communication Technology Use

# Current & upcoming NSF opportunities

## Agriculture/ Food Security

- [NSF-USDA-BBSRC: Early Concept Grants for Exploratory Research \(EAGERs\) to Develop Breakthrough Ideas and Enabling Technologies to Advance Crop Breeding and Functional Genomics](#)
- [Developing Country Collaborations in Plant Genome Research](#)

## Environment, Energy & Water

- [Dimensions of Biodiversity](#)
- [Belmont Forum Joint Initiative with BiodivERsA](#)
- [Environmental Sustainability](#)
- [Climate and Large-Scale Dynamics \(CLD\)](#)

## Other

- [Documenting Endangered Languages - Doctoral Dissertation Research Improvement Grants](#)
- [Smart and Connected Communities \(S&CC\)](#)

## Non-Disciplinary

- [Partnerships for International Research and Education \(PIRE\)](#)
- [Partnerships for Enhanced Engagement in Research \(PEER\)](#)



# Current & upcoming NSF opportunities, cont.

## Scholarships, Fellowships, and Support for International Student Research

- (International) [Research Experiences for Undergraduates \(iREU\) and REU Supplements](#) to existing NSF awards
- [International Research Experiences for Students \(IRES\)](#) managed by NSF's Office of International Science and Engineering
- [Graduate Research Fellowship Program \(GRFP/GROW\)](#)
- (International) Postdoctoral Research

# US Agency for International Development (USAID)

## Mandate

- USG Foreign Assistance
- Ending extreme poverty & promoting resilient societies

## Types of work funded:

- Multiple sectors
  - Overlap with MSU thematic strengths
- Programming
- Capacity building
- Where does research fit?



# Trends in USAID funds to MSU

## (for Africa work)

2008-2017	USAID direct to MSU	MSU as sub-partner	TOTAL
<b># of Grants</b>	20	61	85
<b>\$ per Grant</b>	\$20K - \$11.4M	\$9K - \$8.3M	\$9K - \$11.4M
<b># of countries</b>	8 (and regional)	19 (and regional)	<b>19 (and regional)</b>

### Sample technical areas:

- Food Security & Policy
- Agriculture Value Chains
- Legumes
- Afrobarometer (public opinion)
- Ecosystem Services
- Agricultural Research/Agribusiness Education and Capacity Building

# USAID's partnership approach

## USAID Forward

- Reform to strengthen the USAID.
- Included principle: Fostering high-impact partnerships and local solutions.
- Also required is the use of “new models for public-private partnerships and increased investment directly to partner governments and local organizations.”
- 2010 set target - Give 30% of Mission program funds to local orgs.
- Later dropped 30% target. Focus changed to “local systems,” and “sustainable” development.

# USAID's partnership approach, cont.

## Examples of Partner-led initiatives:

- Partnering to Accelerate Entrepreneurship (PACE) Initiative
- USAID/Indonesia Sustainable Higher Education Research Alliances (SHERA)

## Current & upcoming USAID opportunities

- [PEER: Women in Science Mentoring Program](#)
- [BAA for Sustainable Development in Sub-Saharan Africa](#)
- [USAID/West Africa: Countering Violent Extremism Research and Piloting Program](#)





# National Institutes of Health (NIH)

## Mission

- To gain knowledge about the nature and behavior of living systems.
- To enhance health, lengthen life, and reduce illness and disability.

## Types of funding

- Research
- Training
- Career Development

## Research Foci

- Human diseases
- Human growth and development
- Biological effects of environmental contaminants
- Mental, addictive and physical disorders
- Information exchange

# National Institutes of Health (NIH)

## Structure & Process

- 27 Institutes & Centers
  - Technically focused: eg Child Health and Human Development, Allergy and Infectious Diseases
  - None explicitly international, except **Fogarty International Center**
- Formal solicitations
  - Proposal gets directed to specific center(s)
  - Can have international focus, if technically relevant



National Institutes of Health  
*Turning Discovery Into Health*

# Trends in NIH funds to MSU (for Africa work)

FY 2008-2017	NIH direct to MSU	MSU as sub-partner	TOTAL
<b># of Grants</b>	29	17	<b>46</b>
<b>\$ per Grant</b>	\$25K - \$8.9M	\$16K - \$534K	<b>\$16K - \$8.9M</b>
<b># of countries</b>	5 (and regional)	7 (and regional)	<b>10 (and regional)</b>

## Sample of MSU NIH work:

- HIV & AIDS
  - Enhancing Ugandan HIV-Affected Child Development with Caregiver Training
- Buruli ulcer
- Trypanosomosis
- Malaria & mosquitoes
  - ICEMR

# NIH opportunities & partnering approach

- Global Infectious Disease Research Administration Development Award for Low-and Middle-Income Country Institutions (G11) (PAR-18-335)
  - MSU sub-partner under University of Pretoria.
- Global Infectious Disease (GID) Research Training Program (D43) (PAR-17-057)
- Planning Grant for GID Research Training Program
  - (D71) PAR-17-058
- International Research Ethics Education and Curriculum Development Award (R25) (PAR-16-081)
- Health-professional Education Partnership Initiative
  - (R25) (RFA-TW-17-001)

# Other Federal Agencies

## Sample of agencies funding work in Africa:

- Millennium Challenge Corporation (MCC)
- Centers for Disease Control and Prevention
- US Department of Defense
- US Department of Education
- NASA
- National Endowment For The Humanities
- National Security Agency
- State Department
- USDA, USDA Foreign Ag Service, USDA-NIFA (National Institute of Food and Agriculture)



## Trends in Other Federal funds to MSU (for Africa work)

2008-2017	Federal direct to MSU	MSU as sub-partner	TOTAL
<b># of Grants</b>	76	15	<b>91</b>
<b>\$ per Grant</b>	\$52 - \$1.9M	\$16K - \$1.4M	<b>\$16K - \$1.9M</b>
<b># of countries</b>	26 (and regional)	5 (and regional)	<b>26 (and regional)</b>

## Current opportunities & partnership approaches

- MCC approach



# International Advancement & Foundations

## **Role of the Office of International Advancement:**

- Works with MSU central University Advancement
- Works with international corporations & foundations
- Acts as MSU POC for international advancement efforts
- Monitors interests & funding trends from corps. & foundations
- Works with MSU colleges/units re: int'l advancement
- Coordinates and plans int'l stewardship activities

## **Role college-level advancement offices:**

- Assist in identifying support for your project or initiative
- Work with Office of International Advancement & University Advancement
  - E.g. To seek clearance to approach a corporation or foundation

# International Advancement & Foundations

## Foundation characteristics:

- Typically support projects that:
  - Are national or international in scope,
  - Address world's most challenging problems,
  - Impact large #s of people,
  - Can be self-sustaining after the grant,
  - Multidisciplinary / multi-partner collaborations,
  - Co-created by foundation & grantee (NOT cold, unsolicited)
  - Run by NGOs, advocacy groups, community-based groups, and in-country partners etc. (NOT colleges and universities)
- Program officers are experts in their fields
- Program officers know the top, relevant academics

# International Advancement & Foundations

## Trends in foundation funding (*general, NOT MSU*):

- Gates Foundation is biggest donor by total assets & by total giving.
- Top three technical fields funded by foundations:
  - 1) Health,
  - 2) Education,
  - 3) Human Services  
(largest # of grants)



- Top three regional foci for int'l foundation projects:
  - 1) Sub-Saharan Africa
  - 2) Asia & the Pacific
  - 3) Latin America & Mexico

## Trends in Foundation funds to MSU (for Africa work)

2008-2017	TOTAL
# of Foundations	24
# of Awards	58
\$ per Award	\$2K - \$44M
# of countries	21 (and regional)

### Sample technical areas:

- Education (MasterCard Foundation 21st Century Scholars)
- Regulatory Capacity Building (African Biosafety Network of Expertise - Phase II – Implementation)
- Agriculture, Food Security, & Trade (Guiding Investments in Sustainable Agricultural Intensification in Africa (GISAIA); Building Agricultural Markets in Africa)
- Health & Diseases (Community Acquired Pneumonia, Opportunistic and Bacteremic Syndromes in Young Nigerian Children (CAPOBSYNC)- A Platform Preparatory Study)

# Trends in Other Sources of Funds to MSU

## (for Africa work)

### Associations

- Food and Agriculture Organization of the United Nations
- World Health Organization
- Museums & Community Collaborations Aboard

### Industry/Co

- MidAmerican Energy
- Common Market for Eastern

And Southern Africa

- World Bank

### Other

- Intl Inst for Tropical Agriculture
- Swedish Intl Development Agency
- Dept for International Develop

# Trends in Other Sources of Funds to MSU (for Africa work)

2008-2017	Other direct to MSU	MSU as sub-partner	TOTAL
<b># of Grants</b>	54	13	<b>67</b>
<b>\$ per Grant</b>	\$1K - \$3.1M	\$6K - \$2M	<b>\$1K - \$3.1M</b>
<b># of countries</b>	21 ( <i>and regional</i> )	13 ( <i>and regional</i> )	<b>24</b>

## Sample technical areas

### Measuring public opinion on a variety of issues

- Afrobarometer Expansion Phase
- Five Year Plan for Rounds 5 and 6, 2011-2015

### Agriculture, Ag Policy, Food Security, Value Chains, & Trade

- Transforming key production systems: Maize mixed east and southern Africa

# Other Sources of Funds to MSU, Sample technical areas cont.

## **Agriculture, Ag Policy, Food Security, Value Chains, & Trade, cont.**

- African Agricultural Markets Program (AAMP)
- Rwanda Horticulture Exports Standards Initiative (RHESI)
- Improving Inclusiveness of Ag Value Chains in W. & Central Africa
- Capacity Dev. for Modernizing African Food Systems (MAFS)

## **Institutional Capacity Building**

- Institution Building in Support of IAPRI
- Strengthening Impact Assmnt. in CGIAR System (SIAC) – Phs. 2

## **Climate Change**

- Capacitating Science-Policy Exchange Platforms to Mainstream Climate Change into National Ag. & Food Security Policy Plans

## **Disease**

- Malaria Productivity, & Access in Treatment: Exprmntl. Evidence, Nigeria



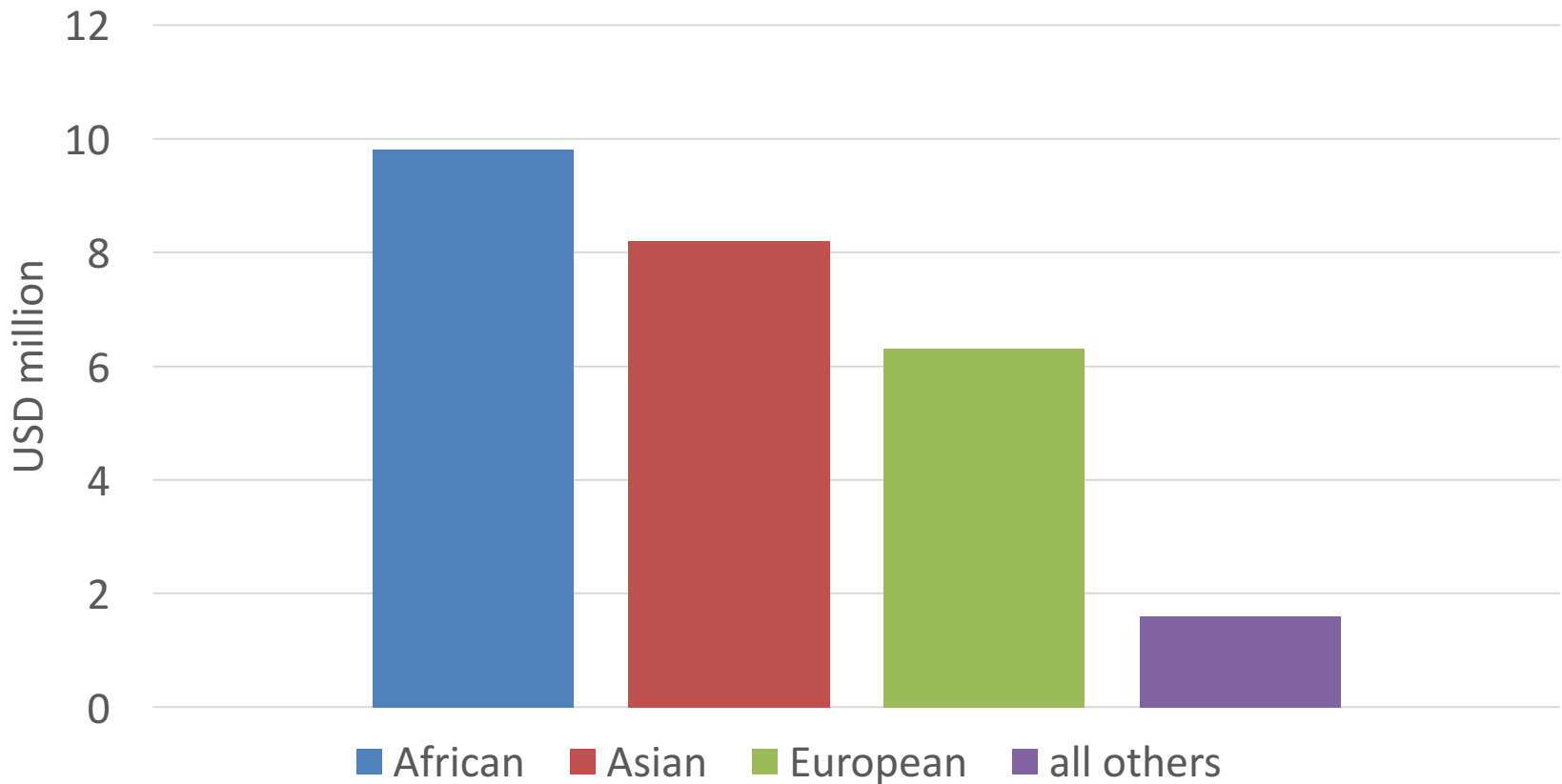


**STRATEGIES FOR ATTRACTING  
EXTERNAL FUNDING/  
RESOURCES & RECOMMENDATIONS**

# Points to Consider

- Build a coalition of support for your proposal by engaging pan-African and/or regional African organizations as stakeholders/supporters
- Show how your proposal links to the programs of AFDB, AU, NEPAD, etc
  - Show how your project will inform and add value to these organizations' own initiatives
- Highlight specific policy questions that your grant will inform or guide
- Consortia are 'in'; single institution grants are 'out'

# African Development Bank grants in 2016 by region of lead recipient



African and Asian-based organizations were prime recipients on 69.5% of AFDB's USD 25.9 million in 2016 disbursements.

# Making your proposal more compelling

- Consider advisory / review committee composed of public and private sector experts to:
  - Ensure that wide range of perspectives are considered
  - Build advocacy from important stakeholder groups in Africa
- Show how your proposal fits into foundation's / donor's own priority areas
- AAP partnership principles – process matters

# AAP Partnership Principles

- **Shared vision** - mutual benefit, mutual capacity building
- Based on **trust, mutual respect, transparency, empathy, and accountability** between the partners.
- Collaboration must be **sustainable** beyond initial grant cycle, with a view toward long-term collaboration
- Founded on making **clear contributions to society**
- All partners engage from the beginning -- objectives, activities, resource mobilization and resource allocation plans are **developed jointly**.
- A governance structure that reinforces **accountability**
- Structured work plan and metrics

# Common Reasons for Rejection

The National Institute of Health (NIH) analyzed the reasons why over 700 research proposal applications were denied:

- Nature of the Problem (18%)
  - It is doubtful that new or useful information will result from the project (14%)
  - The basic hypothesis is unsound (3.5%)
- Approach to the Problem (38.9%)
  - The research plan is nebulous, diffuse and not presented in concrete detail (8.6%)
  - The planned research is not adequately controlled (3.7%).
  - The research plan has not been carefully designed (11.8%)
  - The proposed methods will not yield accurate results (8.8%)
- Competence of the Investigators (38.2%)
  - The applicants need to acquire greater familiarity with the relevant literature (7.2%)
  - The problems to be investigated are more complex than the applicants realize (10.5%)
  - The applicants propose to enter an area of research for which they are not adequately trained (12.8%)
  - The reviewers do not have sufficient confidence in the applicants to approve the present application (6.8%)

# Review Carefully

Based on a sample of 353 research grant applications in a study by the Bureau of Occupational and Vocational Education:

- 18% forgot to number the pages
- 73% forgot to include a table of contents
- 81% had no abstract
- 92% failed to provide resumes of proposed consultants
- 25% had no resume for the principal investigator
- 66% included no plan for project evaluation
- 17% forgot to identify the project director by name
- 20% failed to list the objectives of the project

# MSU Resources

## Other MSU resources for finding funding

Funding update emails, e.g.

- OIRC,
- Environmental Science and Policy Program (ESPP),
- Int'l education
- College units, e.g. CGC, AAP, ESPP, Food Security Group
- ISP thematic and area studies centers, e.g., ASC
- MSU Advancement

## Other non-MSU resources

- DEVEX: <https://www.devex.com/>



# Development Essentials

[About Us](#)

[Courses](#)

[AID Yellow Book](#)

[Consulting Services](#)

[News & Resources](#)

[Contact](#)

## Upcoming Courses

### WINNING USAID GRANTS COURSE

Holiday Inn, Rosslyn Virginia USA - Arlington United States  
Dates: Feb 21 - 23, 2018      Hours: 9:00 am - 5:00 pm

### USAID GRANTS POLICIES AND PROCEDURES COURSE

Holiday Inn, Rosslyn Virginia USA - Arlington United States  
Dates: Feb 26 - 27, 2018      Hours: 9:00 am - 5:00 pm

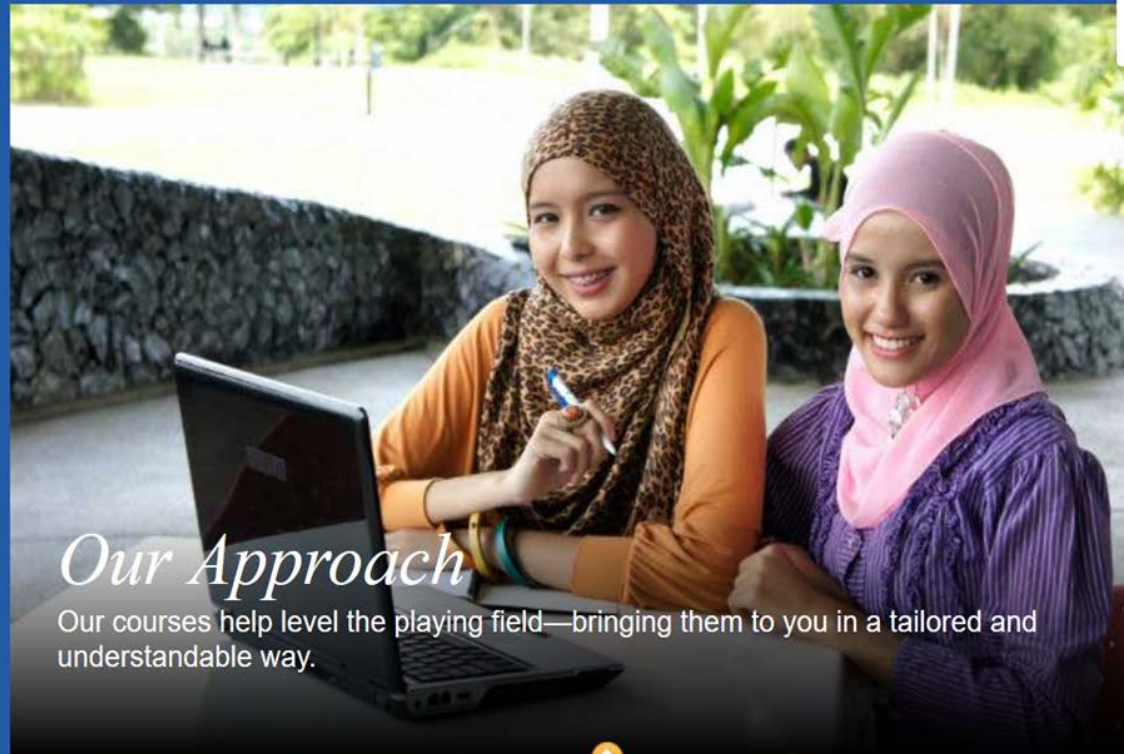
### WINNING USAID CONTRACTS COURSE

Holiday Inn, Rosslyn Virginia USA - Arlington United States  
Dates: Mar 12 - 14, 2018      Hours: 9:00 am - 5:00 pm

### USAID CONTRACTS COMPLIANCE FOR SUCCESS

Holiday Inn, Rosslyn Virginia USA - Arlington United States  
Dates: Mar 15 - 16, 2018      Hours: 9:00 am - 5:00 pm

[See More >](#)



## Our Approach

Our courses help level the playing field—bringing them to you in a tailored and understandable way.

[AID YELLOW BOOK](#)

[UPCOMING COURSES](#)

[OUR APPROACH](#)

[CONSULTING SERVICES](#)

[TESTIMONIALS](#)

# Wrap-up

## Remember...

- Sign-up for listservs
- Survey
- Parking passes
- Docs



# Questions & Answers

## Sample question topics

- Qs about donors
- Qs about opportunities
- Qs about MSU work in Africa
- Qs about AAP
- Qs about OIRC support





# INTRODUCTIONS & NETWORKING

# Introductions

## Faculty

### One minute each

- Name
- Country(ies) of current and/or prospective research
- 1-2 sentences describing your research

## Staff/ Administrators

### One minute each

- Name
- Unit
- Role relative to MSU grant production
- Particular work connection to Africa?



# Best wishes for success and a rewarding grant!

## OIRC

- **Staff:** Karin Dillon, Skye McDonald, & Callista Rakhmatov
- **Email:** [oirc@msu.edu](mailto:oirc@msu.edu)

## AAP

- **Faculty & Staff:** Lisa Frugé, Lisa Hinds, José Jackson-Malete, Amy Jamison, Thom Jayne, & Jamie Monson
- **Email:** [aap@msu.edu](mailto:aap@msu.edu)

## International Advancement

- **Director:** Angha Childress
- **Email:** [angha@msu.edu](mailto:angha@msu.edu)