



MI Bee ID Cards



MI Bee ID Cards

- Michigan is home to more than 460 species of bees
- This is a rough guide to some common groups of Michigan bees
- Visit pollinators.msu.edu for more detailed guides and other resources from MSU Extension
- Images on front cover show relative sizes of bees. Use the following table for actual sizes as referred to in the text:

Tiny	Small	Medium	Large
<8mm (<5/16")	8-12mm (5/16 - 1/2")	12-17mm (1/2-5/8")	>17mm (>5/8")



MSU is an affirmative-action, equal-opportunity employer. Michigan State University Extension programs and materials are open to all without regard to race, color, national origin, gender, gender identity, religion, age, height, weight, disability, political beliefs, sexual orientation, marital status, family status or veteran status.



Small Carpenter Bees
Apidae (*Ceratina* spp.)



Small Carpenter Bees

- Genus *Ceratina*
- Tiny dark blue-green metallic bees
- Little to no hair on their bodies
- Some have white markings on the face
- Nest in hollow or pithy stems, twigs, etc.



MSU is an affirmative-action, equal-opportunity employer. Michigan State University Extension programs and materials are open to all without regard to race, color, national origin, gender, gender identity, religion, age, height, weight, disability, political beliefs, sexual orientation, marital status, family status or veteran status.



Green Metallic Bees

Halictidae

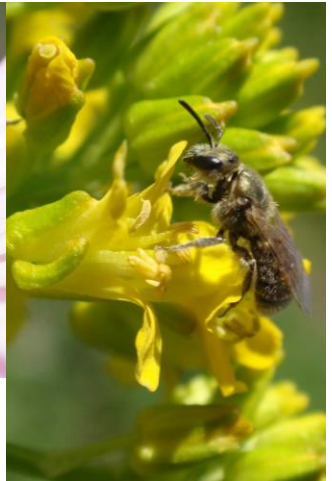
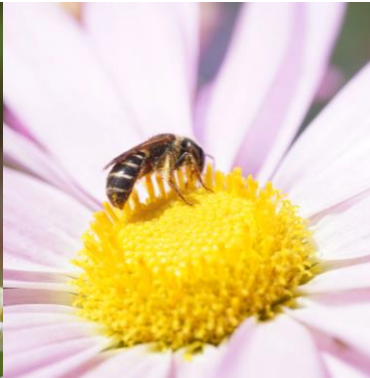


Green Metallic Sweat Bees

- Family Halictidae (sweat bees)
- Tiny to small bright green metallic bees
- Some have alternating green and white or yellowish stripes on their abdomen
- Pollen often loosely carried on body and leg hairs in a disorganized fashion
- Nest in the soil or in rotting logs



MSU is an affirmative-action, equal-opportunity employer. Michigan State University Extension programs and materials are open to all without regard to race, color, national origin, gender, gender identity, religion, age, height, weight, disability, political beliefs, sexual orientation, marital status, family status or veteran status.



Small Dark Sweat Bees
Halictidae



Small Dark Sweat Bees

- Family Halictidae
- Tiny to small bees
- Dark bodies, dull metallic, black or dark green
- Abdomen often with stripes of light hair between the segments
- Pollen often loosely carried on body and leg hairs in a disorganized fashion
- Nest in the soil



MSU is an affirmative-action, equal-opportunity employer. Michigan State University Extension programs and materials are open to all without regard to race, color, national origin, gender, gender identity, religion, age, height, weight, disability, political beliefs, sexual orientation, marital status, family status or veteran status.



Miner Bees
Andrenidae and Colletidae



Miner Bees

- Families Andrenidae (miner bees) and Colletidae (cellophane bees)
- Small to medium bees, appearance variable
- Many resemble slender bumble bees with black bodies and dense yellow hair on the thorax
- Colletidae more commonly have stripes of yellow hair on the abdominal segments
- Andrenidae carry pollen on femur and tibia of hind leg.
- It might look like they have pollen in their “armpit”
- Nest in the soil



MSU is an affirmative-action, equal-opportunity employer. Michigan State University Extension programs and materials are open to all without regard to race, color, national origin, gender, gender identity, religion, age, height, weight, disability, political beliefs, sexual orientation, marital status, family status or veteran status.



Leafcutter Bees
Megachilidae (*Megachile* spp.)

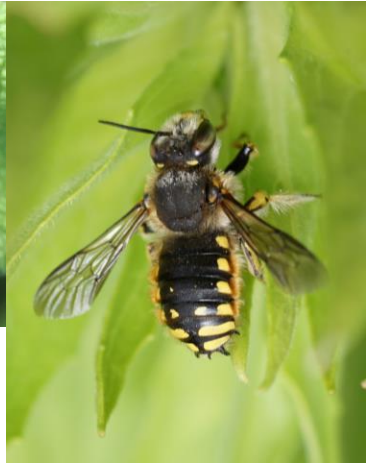


Leafcutter Bees

- Genus *Megachile*
- Small to medium bees with dark bodies
- Light-colored fur is more concentrated on the sides and undersides of the body
- Some species have stripes of light-colored fur between abdominal segments
- Carry pollen on underside of the abdomen (distinguishes them from most other MI bees)
- Nest in natural cavities in dead wood or in the soil
- Common residents of bee hotels and bee condos



MSU is an affirmative-action, equal-opportunity employer. Michigan State University Extension programs and materials are open to all without regard to race, color, national origin, gender, gender identity, religion, age, height, weight, disability, political beliefs, sexual orientation, marital status, family status or veteran status.



Wool Carder Bees
Megachilidae (*Anthidium* spp.)

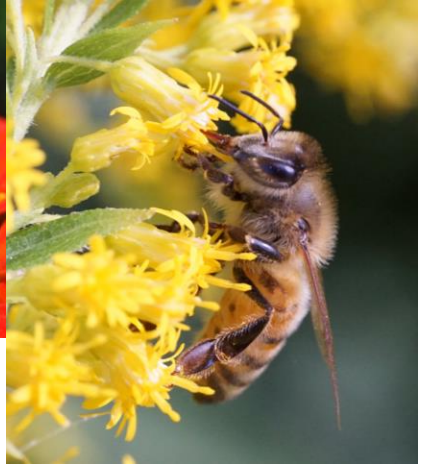


Wool Carder Bees

- Family Megachilidae, Genus *Anthidium*
- Medium bees with distinctive black and yellow striped abdomens
- Light-colored fur is more concentrated on the sides and undersides of the body
- Males are territorial and are often seen hovering near flower patches and aggressively chasing away other insects
- Nest in natural cavities in dead wood
- Common residents of bee hotels and bee condos



MSU is an affirmative-action, equal-opportunity employer. Michigan State University Extension programs and materials are open to all without regard to race, color, national origin, gender, gender identity, religion, age, height, weight, disability, political beliefs, sexual orientation, marital status, family status or veteran status.



Honey Bees
Apidae (Apis mellifera)



Honey Bees

- Genus *Apis*
- Medium bees with orange/black bodies
- Light-colored fur on the thorax and in stripes on abdomen
- Darker-colored individuals are almost completely black with alternating light stripes of hair on abdomen
- Sometimes carrying large clump of pollen on tibia of hind leg
- Nest in large natural cavities or artificial hives



MSU is an affirmative-action, equal-opportunity employer. Michigan State University Extension programs and materials are open to all without regard to race, color, national origin, gender, gender identity, religion, age, height, weight, disability, political beliefs, sexual orientation, marital status, family status or veteran status.



Bumble Bees

Apidae (*Bombus* spp.)



Bumble Bees

- Genus *Bombus*
- Medium (worker) to large (queen) bees
- Robust bees with dense yellow fur
- Sometimes carrying large clump of pollen on tibia of hind leg
- Amount and locations of fur is useful for identification to species
- Abdomen often with dense black and yellow hair (distinguishes them from carpenter bees)
- Nest in clumps of grass, cavities in or near the soil, and often in abandoned rodent nests



MSU is an affirmative-action, equal-opportunity employer. Michigan State University Extension programs and materials are open to all without regard to race, color, national origin, gender, gender identity, religion, age, height, weight, disability, political beliefs, sexual orientation, marital status, family status or veteran status.



Carpenter Bees
Apidae (*Xylocopa* spp.)



Carpenter Bees

- Genus Xylocopa
- Large bees
- Little to no hair on their abdomen (distinguishes them from bumble bees)
- Thorax has dense yellow or whitish hair
- Large heads and mandibles adapted for chewing wood
- Nest in dead wood



MSU is an affirmative-action, equal-opportunity employer. Michigan State University Extension programs and materials are open to all without regard to race, color, national origin, gender, gender identity, religion, age, height, weight, disability, political beliefs, sexual orientation, marital status, family status or veteran status.