

2022 SKILLATHON

Michigan 4-H State Championship

Test your knowledge and comprehension of animal science and livestock management practices.



MICHIGAN STATE UNIVERSITY | Extension



Poultry- Senior



Question 1



What breed is this?

A. Orpington

B. Rhode Island Red

C. Leg Horn

D. Wyandotte



Question 2



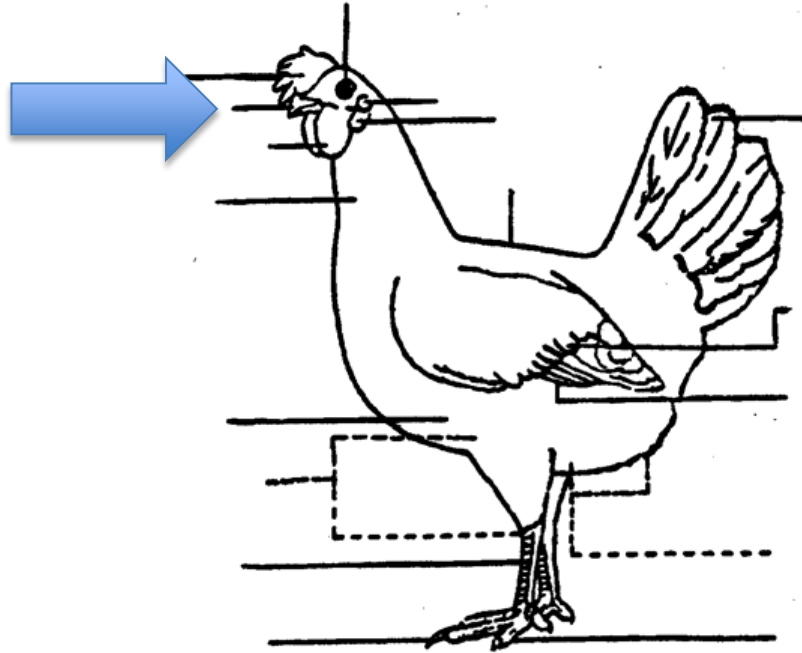
What breed is this?

- A. Orpington
- B. Rhode Island Red

- C. Leg Horn
- D. Wyandotte



Question 3



What part is this?

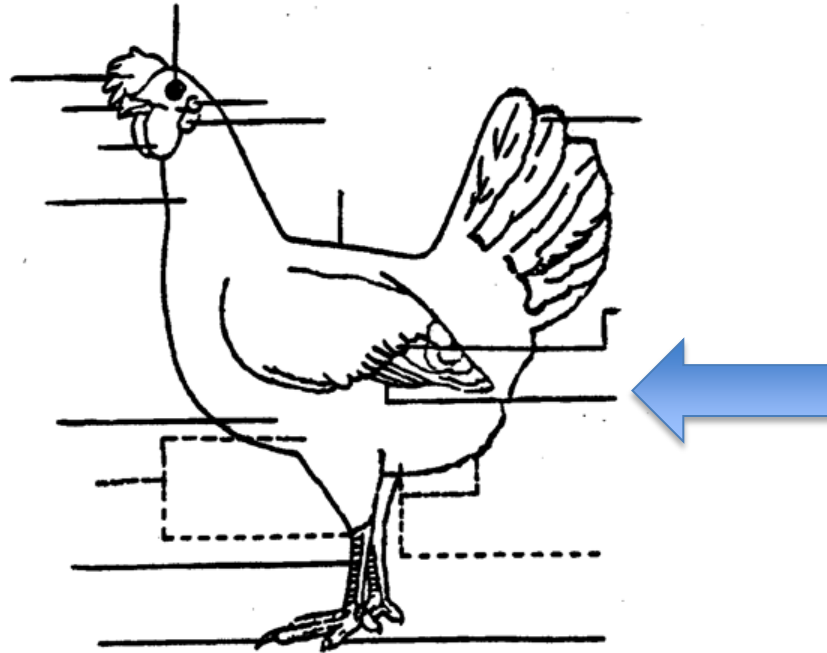
- A. Comb
- B. Eye

- C. Beak
- D. Ear



Question 4

What part is this?

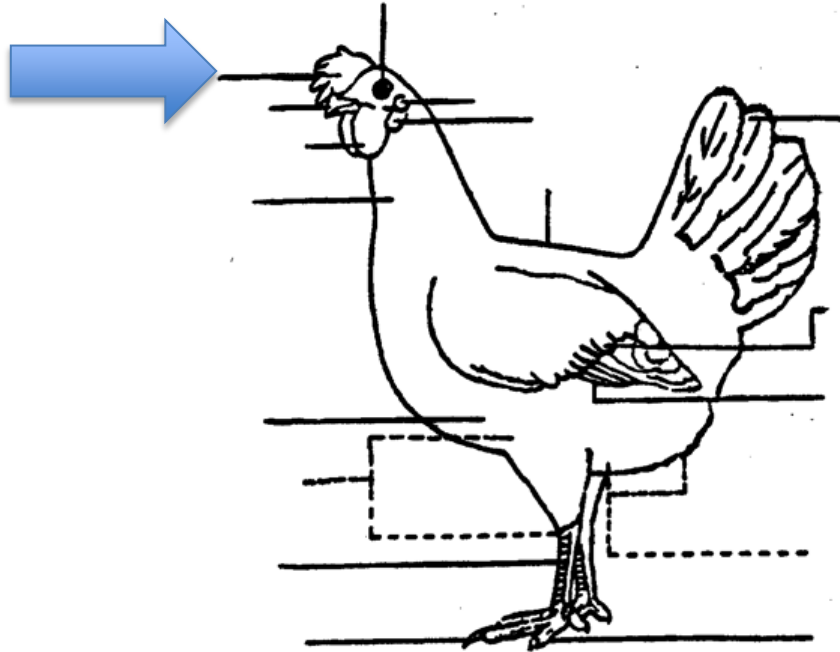


- A. Wing Converts
- B. Secondaries

- C. Primaries
- D. Tail Feather



Question 5



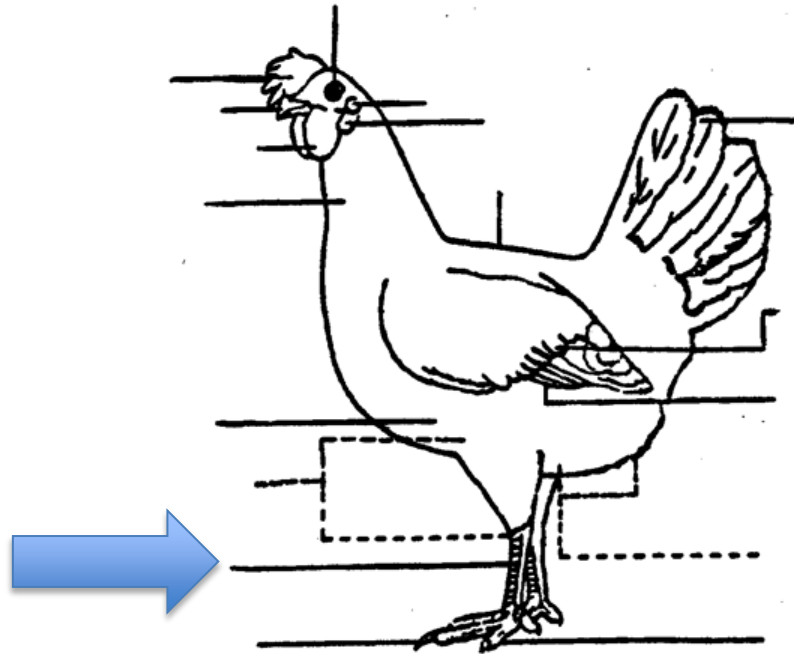
What part is this?

- A. Brush
- B. Comb

- C. Ear
- D. Eye



Question 6



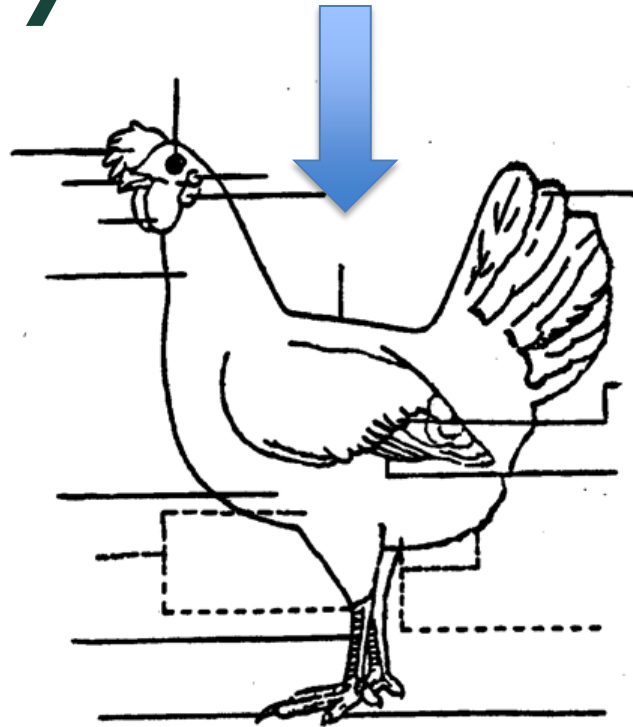
What part is this?

- A. Thigh
- B. Toe

- C. Leg
- D. Shank



Question 7



What part is this?

- A. Chine
- B. Rump

- C. Loin
- D. Sweep of back



Question 8



What cut of meat is this?

- A. Leg
- B. Thigh

- C. Wing
- D. Shoulder



Question 9



What cut of meat is this?

- A. Thigh
- B. Breast

- C. Backstrap
- D. Breast Tenderloin



Question 10

What internal organ is this?



A. Heart

C. Gizzard

B. Liver

D. Lung



Question 11

By looking at the pictures, what disease are we testing for?



- A. Pseudorabies
- B. BVD

- C. Pullorum
- D. Tetanus



Question 12

COUNTRY FEED LAYER MASH
Chicken Layer Feed
GUARANTEED ANALYSIS

PROTEIN	min	17.0%
LYSINE	min	0.8%
METHIONINE	min	0.3%
FAT	min	3.0%
FIBER	max	2.8%
CALCIUM	min	2.4%
CALCIUM	max	2.9%
PHOSPHORUS	min	0.5%
SALT	min	0.3%
SALT	max	0.8%


INGREDIENTS

grain products, plant protein products, calcium carbonate, animal protein products, processed grain by-products, salt, monocalcium phosphate, dicalcium phosphate, methionine supplement, vitamin A acetate, D-activated animal sterol (source of vitamin D3), vitamin E supplement, niacin, calcium pantothenate, menadione dimethylprimidinol bisulfite (source of vitamin K activity), riboflavin supplement, folic acid, pyridoxinehydrochloride, vitamin B12 supplement, thiamine mononitrate, ferrous sulfate, cobalt carbonate, zinc oxide, zinc sulfate, ethylenediamine dihydriodide, calcium iodate, copper sulfate, manganous oxide, manganese sulfate, choline chloride, L-lysine, sodium selenite.


This product has been formulated specifically for laying hens and is not intended for other species.

FEEDING DIRECTIONS:
Feed as the sole ration to laying hens.

100 lb (45.4 kg)



Country Feed Supply
389 West Kittle Road
Mio, Michigan 48647



A. 16%

B. 17%

C. 18%

D. 19%



Question 13



What is an essential mineral hens need to produce eggs?

A. Calcium

C. Magnesium

B. Zinc

D. Phosphorus



Question 14

What is the most important thing to provide/feed your animal?

A. Grain

C. Water

B. Hay

D. Bugs



Question 15

How many eggs does a hen lay per day?



A. 0

B. 1

C. 2

D. 3



Question 16

What temperature should you keep your brooder when first placing your chicks in it?

A. 99.5-100.5

C. 105-106

B. 92.5-93.5

D. 97-98



Question 17



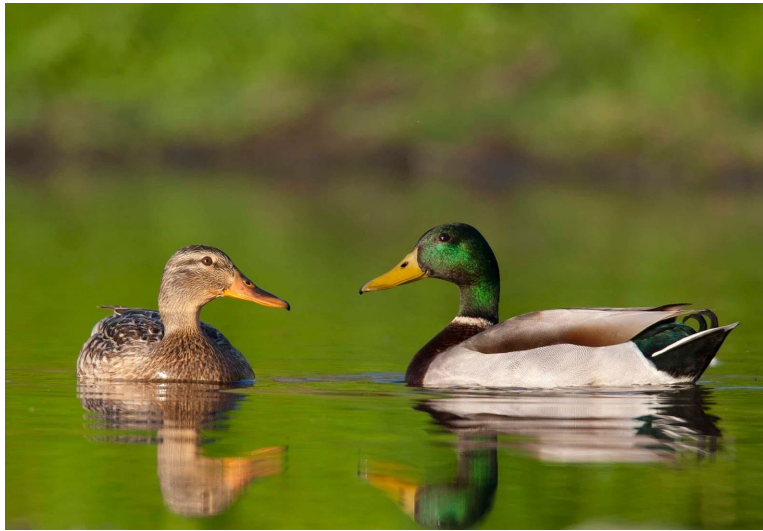
What is this breed?

- A. Broad Breasted White
- B. Broad Breasted Bronze

- C. White Holland
- D. Bourbon Red



Question 18



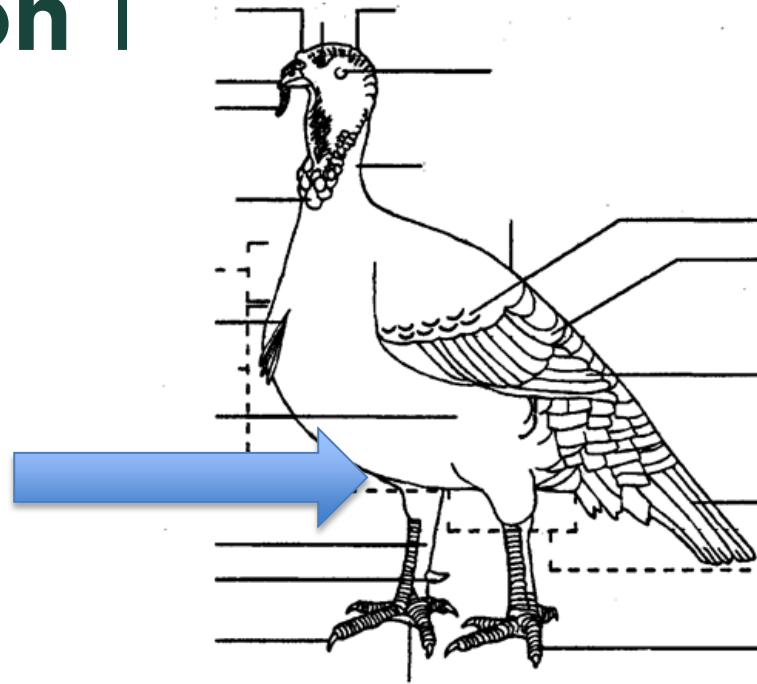
What is
this breed?

- A. Woodland
- B. Mallard

- C. Pekin
- D. Mighty Duck



Question 1



What is this part?

- A. Breast
- B. Beard

- C. Keel
- D. Leg



Question 20

How old should a turkey be to take it to the fair?

A. 10-12 weeks

C. 24-26 weeks

B. 20-22 weeks

D. 16-18 weeks



Question 21

What is a capon?



- A. Male Goose
- B. Female Turkey

- C. Castrated Rooster
- D. Castrated Duck




Medication Directions

Question 22

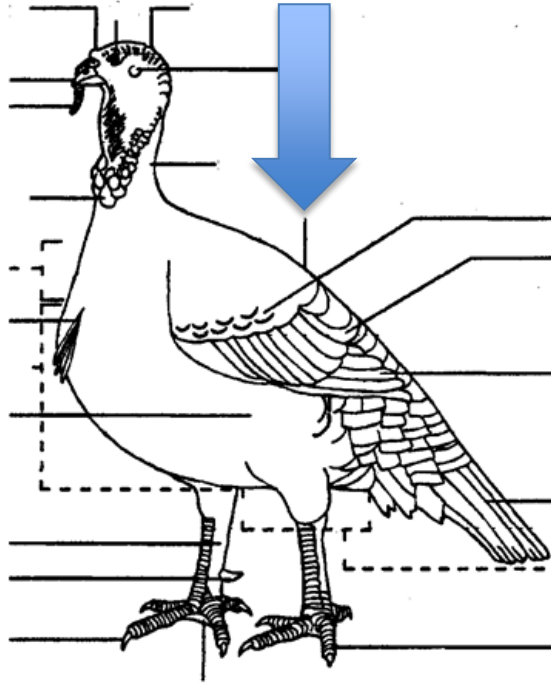
How long is the withdrawal time?

- A. 5 days
- B. no withdrawal time
- C. 3 days
- D. 1 day

<i>Drug Name</i> —————		Carramycin-152		<i>Active Ingredients</i>
		(oxytetracycline HCl as soluble powder)		
		For control and treatment of specific disease in poultry, cattle, swine, and sheep.		<i>Species and Animal Class</i>
CAREFULLY READ ALL DIRECTIONS BEFORE USING THIS PRODUCT.				
Soluble Powder for Use in Drinking Water Only.				
Active Ingredients: Carramycin-152 is a broad-spectrum antibiotic. This 4.78 oz packet contains 102.4 grams oxytetracycline HCl (after mixing with clean, fresh water - 512 gallons containing 200 mg oxytetracycline HCl per gallon; 256 gallons containing 400 mg oxytetracycline HCl per gallon; 128 gallons containing 800 mg oxytetracycline HCl per gallon).				
<i>Approved Uses</i>	Indications: For control of poultry diseases caused by organisms susceptible to oxytetracycline.			
Recommended Dosage				
Add the following amount to two (2) gallons of fresh, clean water to make the stock solution.				
Mix one (1) ounce of stock solution per one (1) gallon of drinking water.				
<i>Dosage</i>	}	Chickens	Dosage	Packs/2 Gallons Stock Solution
			Infectious synovitis	200mg/gal 1/2
<i>Cautions and Warnings</i>	}	Turkeys	Chronic respiratory disease	800mg/gal 2
			Fowl cholera	800mg/gal 2
		Infectious synovitis	400mg/gal 1	
		Hexamitiasis	200mg/gal 1/2	
Cautions: 1. Carramycin-152 is for use in flock drinking water only. 2. Medicate continuously at the first clinical signs of disease and continue for 7 to 14 consecutive days. If improvement is not noted within 24 to 48 hours, consult a veterinarian or diagnostic laboratory to determine diagnosis and advice on dosage. 3. Use as sole source of oxytetracycline. Do not use for more than 14 consecutive days in chickens and turkeys or five (5) consecutive days in cattle, sheep, or swine. 4. Carramycin-152 is to be stored below 77° F (25° C). 5. The concentration of drug required in medicated water must be adequate to compensate for variations in age of the animal, feed consumption rate, and the environmental temperature and humidity - each of which affects water consumption.				
<i>Available Sizes</i>	How Supplied: Carramycin-152 soluble powder is available in packets of 4.78 oz.			
Livestock Drug - Not For Human Use		Distributed by		TAKE TIME
KEEP OUT OF CHILDREN'S REACH		Livestock Health, Inc.		 OBSERVE LABEL DIRECTIONS

Question 23

What is this part?

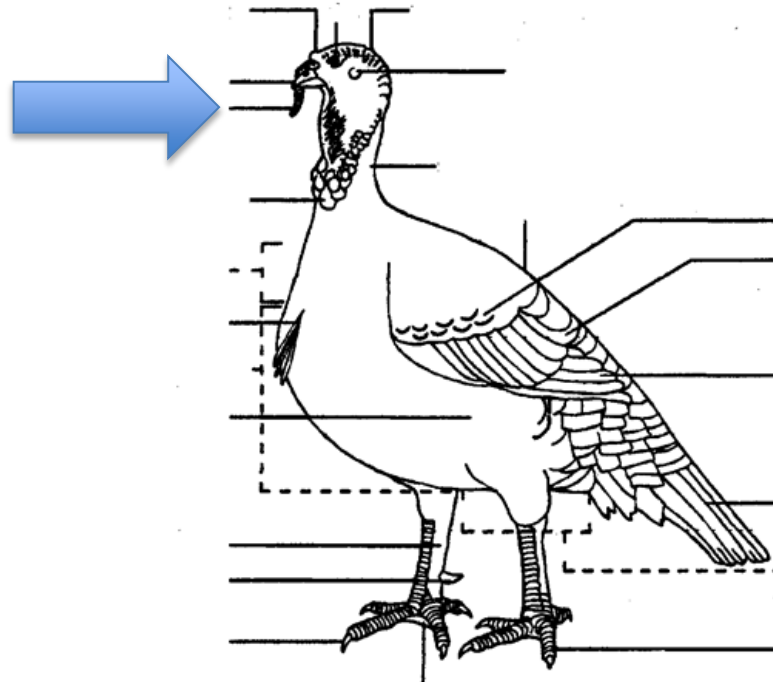


- A. Back
- B. Saddle

- C. Loin
- D. Rump



Question 24



What part
is this?

- A. Beak
- B. Ear

- C. Eye
- D. Appendage



Question 25

A highly [contagious](#) viral disease with up to 100 percent mortality in domestic fowl. Caused by influenza A virus subtypes H5 and H7. All types of birds are susceptible to the virus, but outbreaks occur most often in chickens and turkeys. The infection may be brought by migratory wild birds which can carry the virus, but show no signs of disease. Humans are only rarely affected.

A. Pullorum

C. Bird Flu

B. Avian Influenza

D. Fowl Typhoid



2022 Poultry Study Guide Answers

- | | |
|-------|-------|
| 1. A | 14. C |
| 2. B | 15. B |
| 3. C | 16. A |
| 4. B | 17. B |
| 5. B | 18. B |
| 6. D | 19. C |
| 7. D | 20. D |
| 8. B | 21. C |
| 9. D | 22. A |
| 10. A | 23. B |
| 11. C | 24. D |
| 12. B | 25. B |
| 13. A | |

