

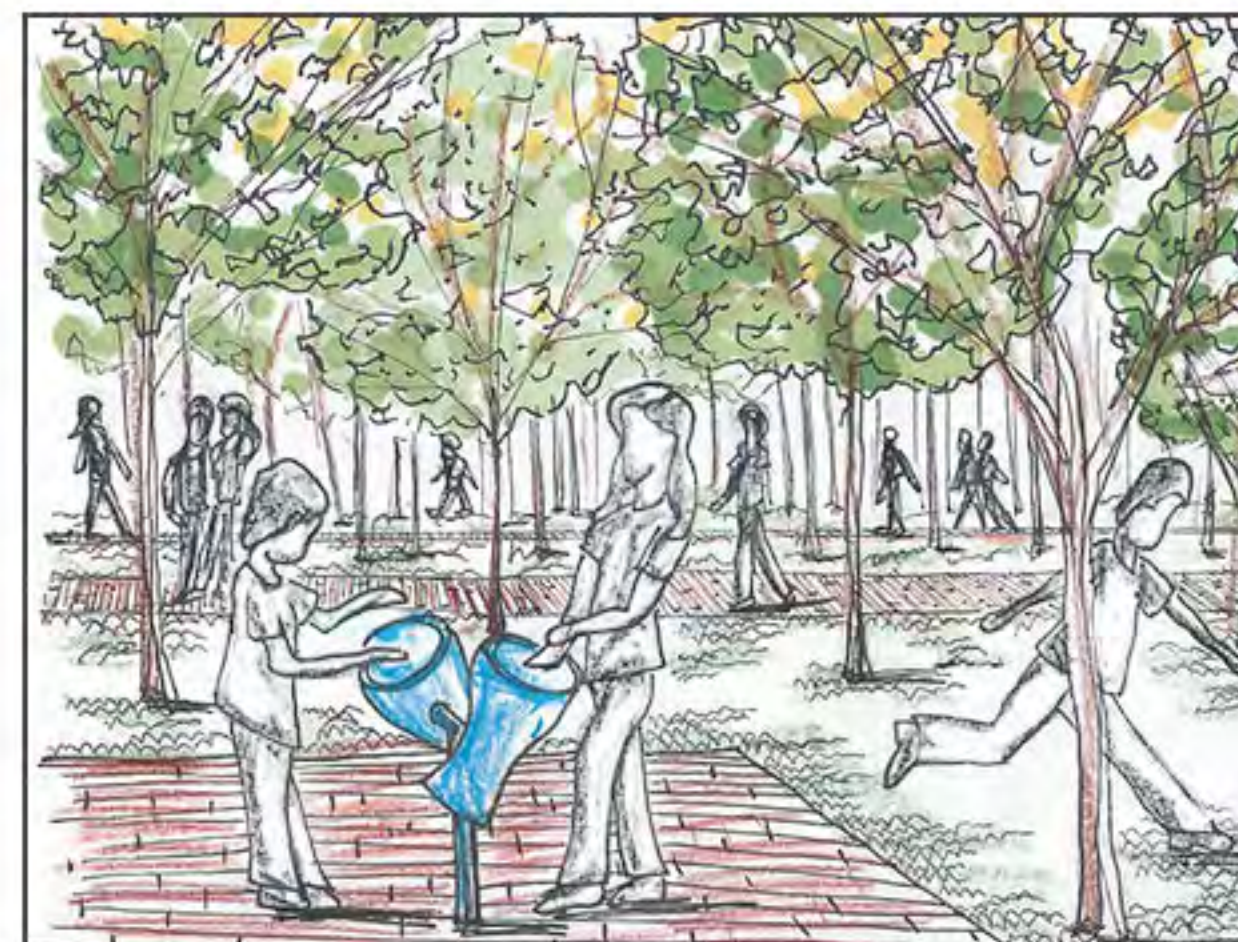
CROSSROADS



CORNER VIEW TO SOUND PARK AT GRAND RIVER AND CLARK STREET



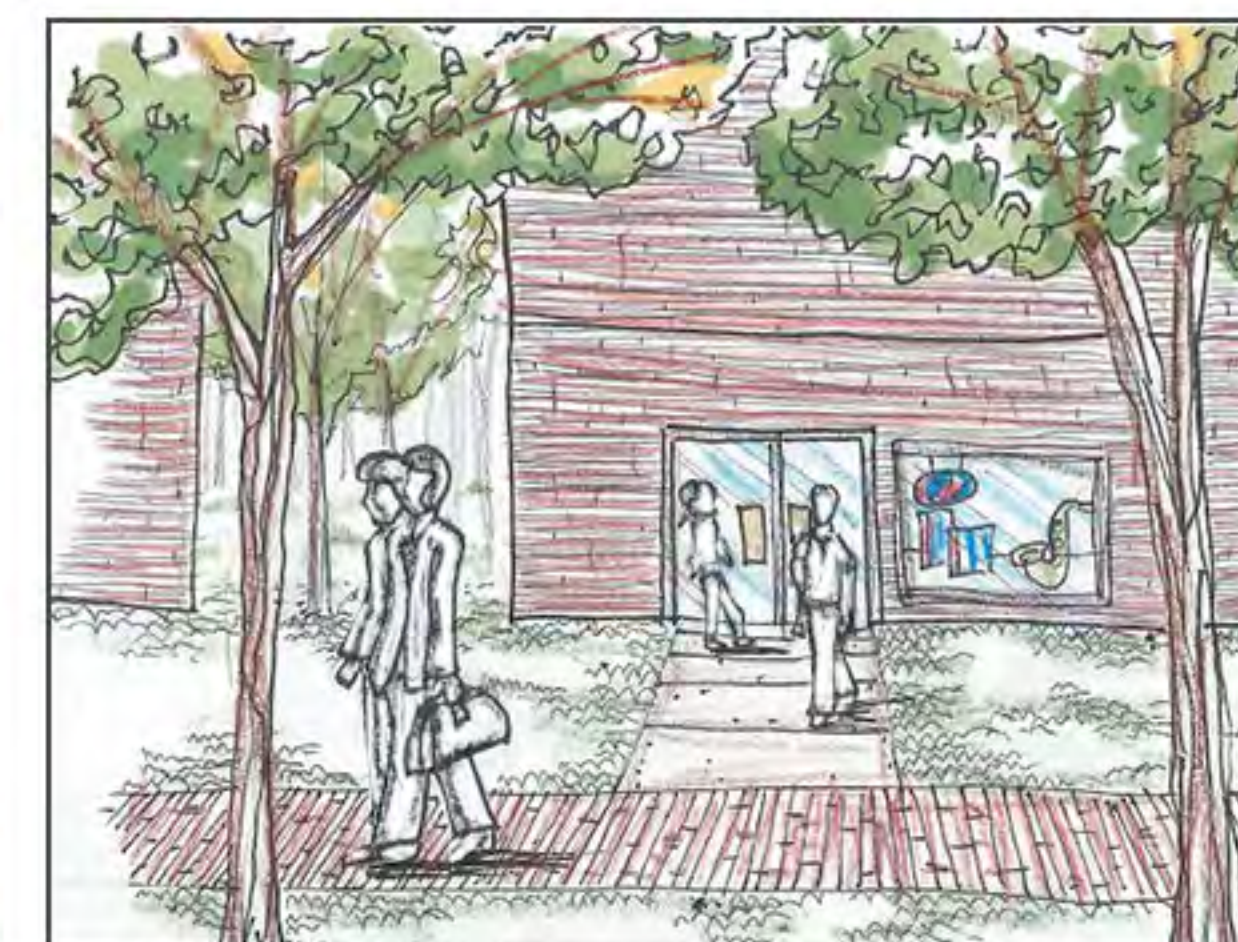
WIND CHIMES SUSPENDED FROM LOWER BRANCHES



INTERACTIVE PERCUSSION INSTRUMENTS



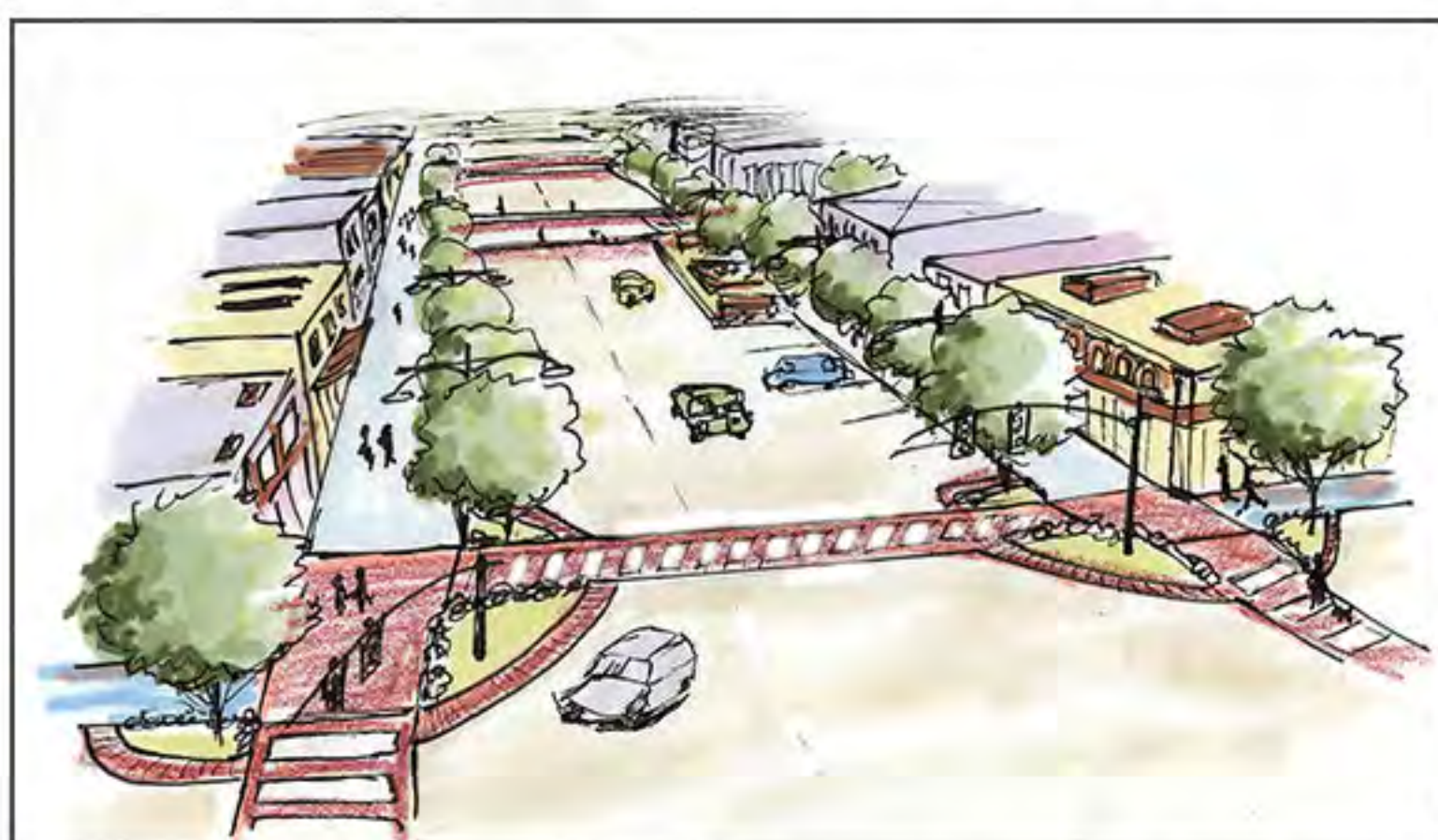
XYLOPHONE AND BELL EQUIPMENT



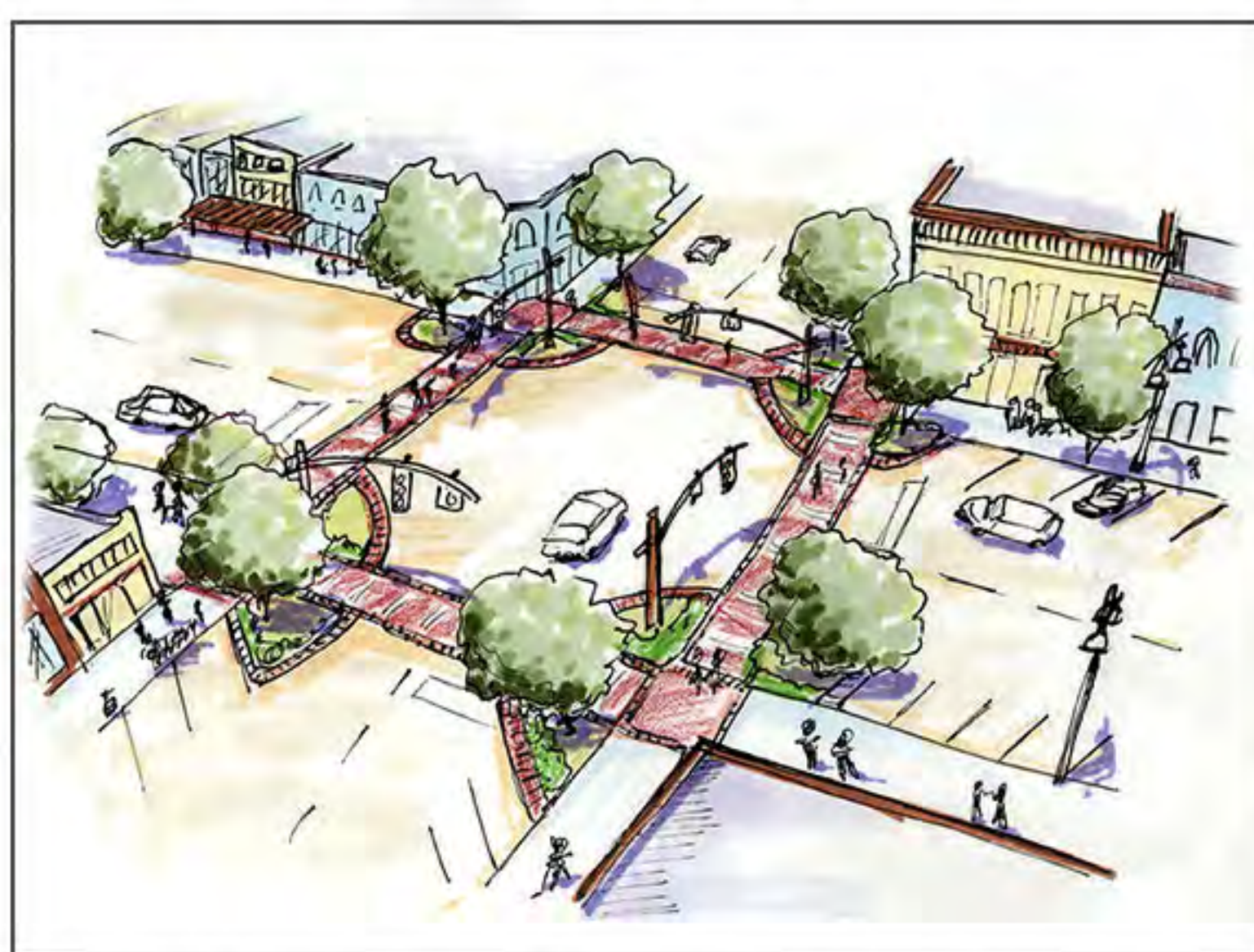
BACKDOOR ACCESS TO STORES ALONG MAIN STREET



AERIAL PERSPECTIVE OF POCKET PARKS

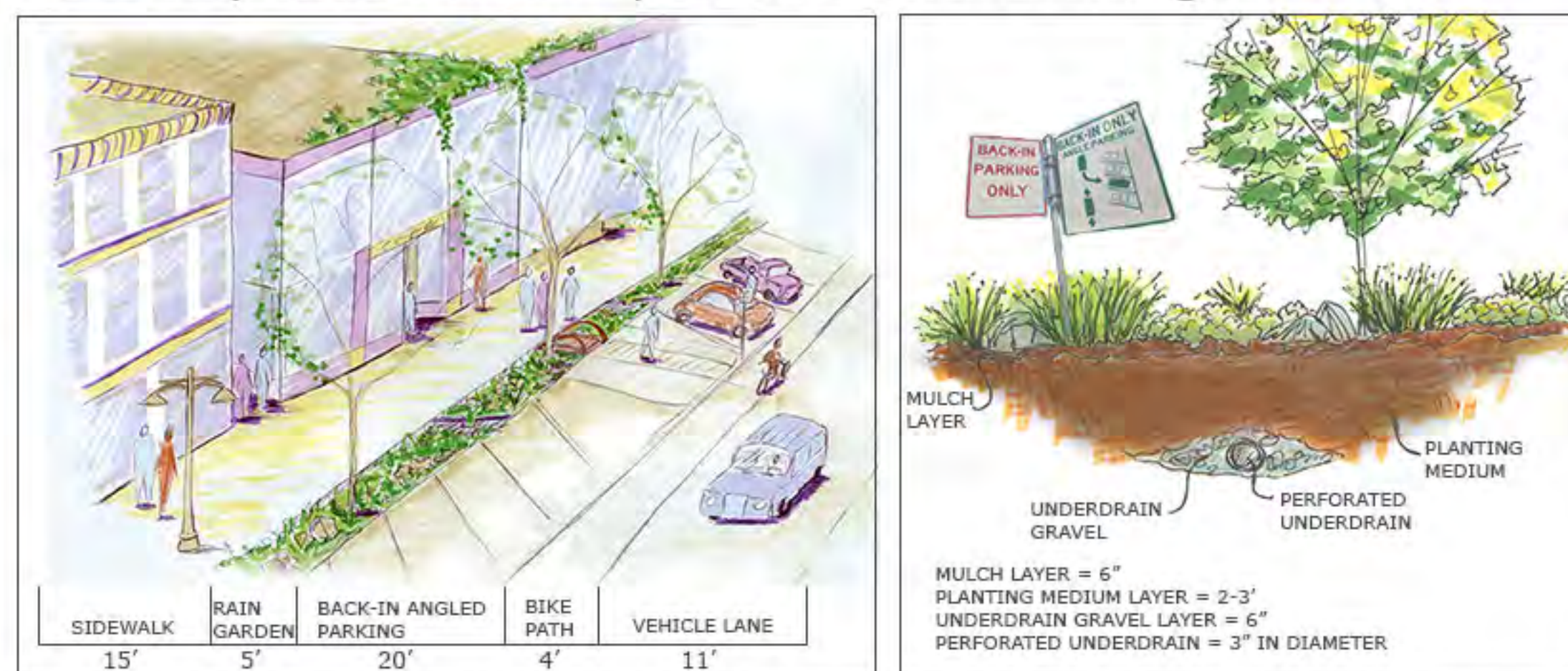


PERSPECTIVE SKETCH DOWN GRAND RIVER



INTERSECTION OF GRAND RIVER AND MAIN STREET

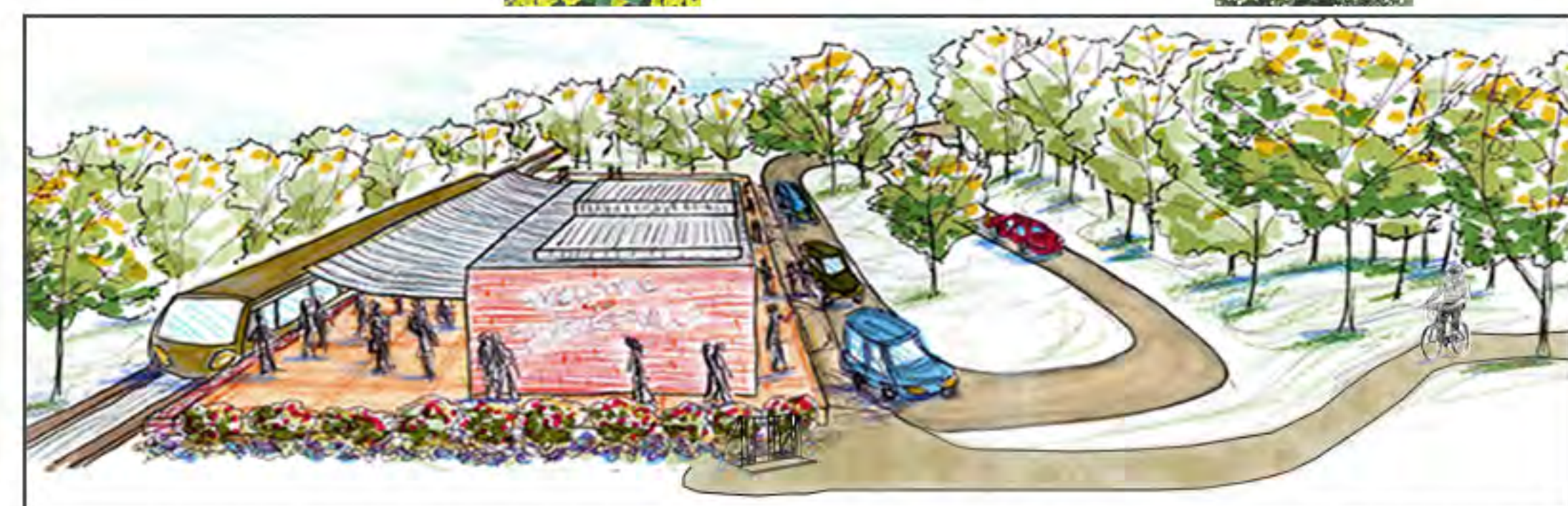
The designed sites have many opportunities crossroads for the future of the community: to volunteer, interact, gather, and celebrate Webberville's future as a growing village. Each designed space incorporates the new identity and character within Webberville by utilizing the best plants, materials, and site amenities. The core is fully visualized with each element in its place, creating relationships between them to enhance the activity and harmony of the entire village.



Complete streets allow for safe on-street parking and a bike lane which students may utilize for travelling to school. A bioswale along the sidewalk provides beautiful curb appeal that will detain any storm water on the site and provide colorful flowering plants. Small, slit steel bridges cross through the garden to allow pedestrian access to the street.

RAIN GARDEN PLANT LIST EXAMPLES

- | | | | |
|--|--|---------------------------------------|--|
| Asclepias incarnata
Swamp Milkweed | | Lobelia cardinalis
Cardinal Flower | |
| Aronia melanocarpa
Black Chokeberry | | Panicum virgatum
Switchgrass | |
| Aster novae-angliae
New England Aster | | Physocarpus opulifolius
Ninebark | |
| Caltha palustris
Marsh Marigold | | Viburnum dentatum
Arrowwood | |



FUTURE TRAIN STATION AND PLATFORM INTO WEBBERVILLE



Welcome signs indicate arrival in Webberville and will be constructed from corten steel formed to represent the arching and crossroads concept found repeating throughout the village and its elements.



Outdoor dining space in New York
www.urbanedgeny.com

POCKET PARK EXAMPLES AROUND THE WORLD



Campidoglio in Rome, Italy
www.greatbuildings.com



The paved pocket park acts as a public space for multiple festivals and outdoor dining for the community. The layout of these buildings creates a pleasurable enclosure desired for this particular pocket park.



Multiple streetscapes will incorporate the rain garden design to be discovered within the village core in Webberville. This will bring color, texture, and overall interest to the village's shops and civic buildings.

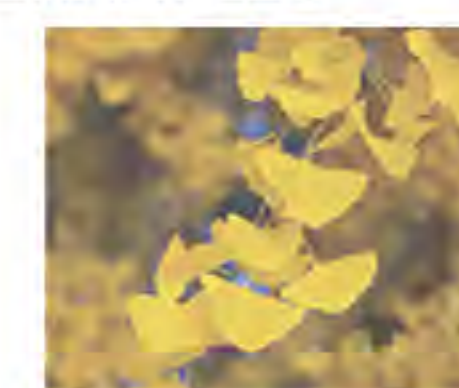


A bike trail and river walk will caress the banks of the Kalamink Creek to provide non-motorized traffic with better direction while exploring more of Webberville outside its village core.

STREETSCAPE TREE EXAMPLES



Acer platanoides
Norway Maple



Ginkgo biloba
Ginkgo Tree



Platanus x acerfolia
London Planetree



Syringa reticulata
Japanese Tree Lilac

DESIGN DETAILS AND SITE SKETCHES
THE VILLAGE OF WEBBERVILLE, MI