

## Southwest Michigan Field Crops Update January 2025

Here are updates from the MSU Extension Field Crops team in Southwest Michigan. If you have any items you would like me to include in future email updates - whether events you want others to know about or topics you would like to have addressed - please send an email or call the St. Joseph County Extension office.

Contents:

- Announcements
- EPA Bulletins Live! Two
- [Weather Update](#)
- [Calendar](#)
- [MSU Extension Digest Briefs](#)

## Tell Us How You Really Feel



Every three years, the MSU Extension field crops team sends out a needs assessment. **This is a statewide survey, and I want SW MI to be justly represented, so PLEASE share your honest feedback, both positive and negative!** Share the survey with everyone you know who grows or works with field crops. Just copy and paste this link into a text or email to share with others (and click on it to take the survey):

[https://msu.co1.qualtrics.com/jfe/form/SV\\_1ZDVTS01EGJlFIG](https://msu.co1.qualtrics.com/jfe/form/SV_1ZDVTS01EGJlFIG).

# IMPORTANT

## WHEAT: Register for Great Lakes YEN (Yield Enhancement Network) Now Through January 31

For growers interested in participating, registration closes January 31, 2025. To register or for more information on Great Lakes YEN visit <https://www.GreatLakesYEN.com> or look for the hashtag #GreatLakesYEN.

Every farm involved in the Great Lakes YEN shares soil, tissue and whole plant analysis for comparison and benchmarking. Growers receive reports specific to their field at the end of the season, allowing the opportunity to learn more about how their wheat crop develops and produces yield, and how they compare to their peers.

**Great Lakes YEN registration for 2025 closes January 31.** Growers must be registered and submit the \$300 participation fee prior to program launch in February 2025.

Established in 2021, the Great Lakes YEN (Yield Enhancement Network) was created in partnership with the Michigan Wheat Program, Grain Farmers of Ontario, Michigan State University, the Ontario Ministry of Agriculture, Food and Rural Affairs and the University of Guelph, to improve crop returns through greater understanding of crop performance and increased collaboration between industry and farmers. For more information visit [www.GreatLakesYEN.com](http://www.GreatLakesYEN.com).

## Pine Ridge Farm Services Winter Meeting: January 15

Pine Ridge Farm Services is hosting their annual winter meeting on January 15 at Rouch World Event Center in Sturgis. They will be discussing the High Management Test Plot Results. There will be donuts, displays, presentations, and lunch. Contact Russ Kimmons (517-719-1676) or Aaron Howe (269-579-0828) with questions. [Register here](#).

## 2025 Michigan Manure Summit: January 22

The Michigan Manure Management Summit, hosted by Michigan State University Extension and Michigan Farm Bureau, is an annual educational event that provides updates on the science and best practices of manure management. The program is specifically designed for anyone who hauls and applies manure. The Summit also provides required CECs for individuals who have been certified in any level by the Michigan Manure Hauler Certification Program. [Register here](#).

### Michigan Manure Hauler CERTIFICATION PROGRAM

Voluntary program to help reduce risk  
For anyone who hauls and applies manure



To learn more,  
scan the QR code

Presented in Partnership by:  
 MICHIGAN FARM BUREAU FAMILY OF COMPANIES | MICHIGAN STATE UNIVERSITY | Extension



SAVE  
THE  
DATE

January 22, 2025



MICHIGAN MANURE  
SUMMIT

## Southwest Michigan ICPM Update: February 5

Topics at the Integrated Crop and Pest Management Update Dowagiac location include a crop and soil fertility Q&A with Dr. Kurt Steinke ([click here to submit questions ahead of time](#)), weed control updates, how drainage can protect your crop, SCN and SDS management, and more. Contact the St Joseph MSU Extension Office at 269-467-5511 for help registering or with questions. [Register online here](#).

## Branch County Farmers Day: February 17

Branch County Farmers Day will be held Feb 17 at the Branch Area Careers Center in Coldwater. There will be two separate sessions: pesticide review and field crops education. **Please only register for the field crops sessions OR the review, not both.** The pesticide review is mandatory for the afternoon testing. Register to attend the pesticide review and take the pesticide applicator test [here](#). Note that 4 RUP credits are available from the pesticide review if you already have an unexpired license. The cost is \$25.

The field crops education sessions are held concurrently during the pesticide review and feature speakers from MSU Extension on a variety of topics, including solar, forage management, weed control, pesticides and irrigation, conservation tillage, and more. The field crops education sessions are free thanks to generous sponsorship from the Branch County Agribusiness Council. The registration is not quite live yet, but the link will be sent out soon. Questions can be directed to the MSU Extension Branch County office: (517) 279-4311 ext 0.

## Michiana Irrigated Corn and Soybean Conference in Elkhart, IN: March 5

This will NOT be held at the Blue Gate as in years past. It will be held on March 5 at the Elkhart County Fairgrounds Ag Hall. More details to come.

## MSU Extension Scouting School 2025 to Be Held in Southwest Michigan

MSU Extension Scouting School will be held in SW MI in 2025. This is the second year of the program, and it will rotate locations in Michigan each year. Don't miss having it so close by this upcoming year! For more information or to register, [click here](#). Reach out to me (Nicolle Ritchie, [ritchi67@msu.edu](mailto:ritchi67@msu.edu) or 269-858-8739) with questions.

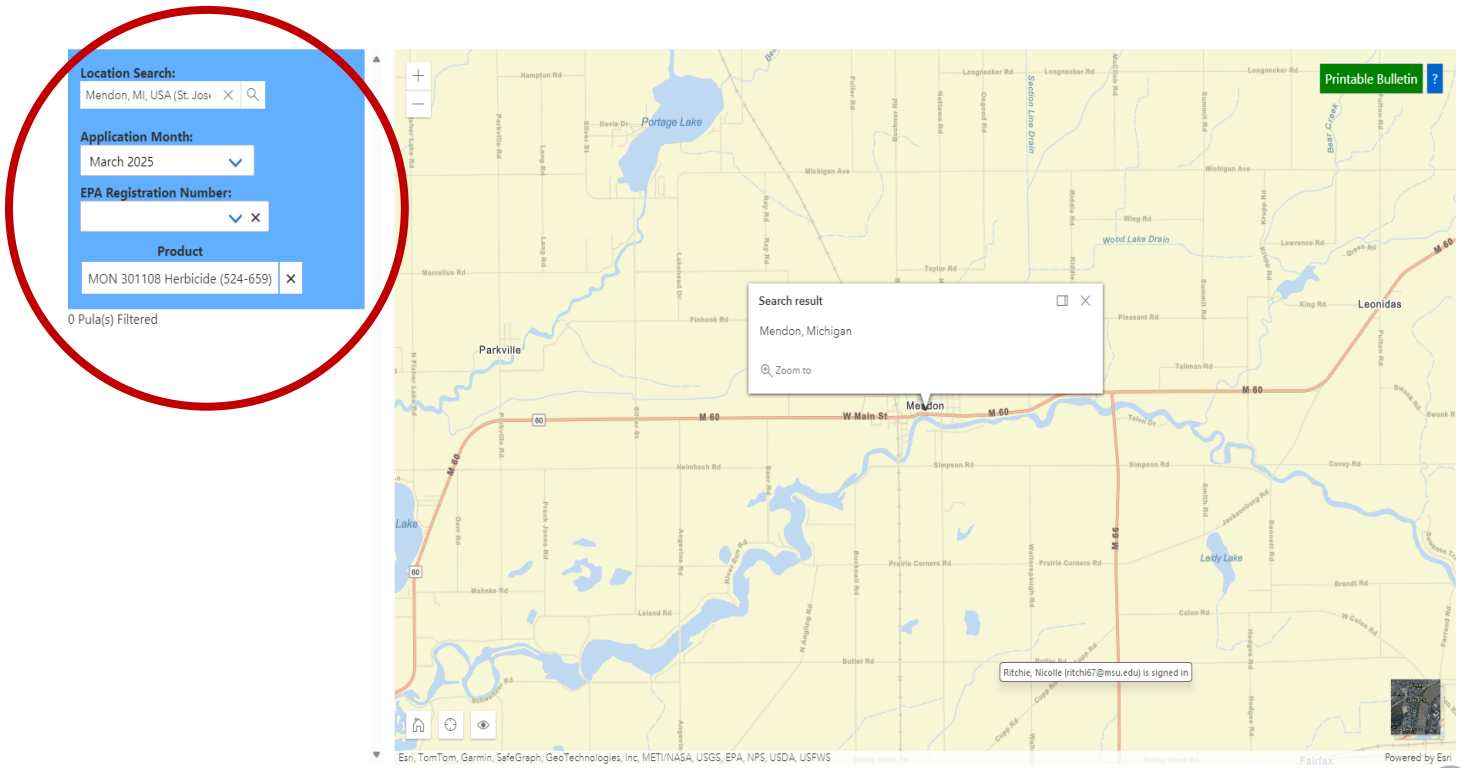


## EPA Bulletins Live! Two

Before you apply any pesticides in 2025, check the [Bulletins Live! Two website](#). This is a legal requirement to comply with the Endangered Species Act. The website requires you to first, enter a location (in this example the location was Mendon, MI); second, enter the month of application (March 2025); and third, enter the EPA registration number for the product you will use (524-659 from Roundup PowerMAX 3). The map will either turn pink (if the pesticide has use limitations in the area) or yellow (if there are no use limitations, such as in this example). Where there are pesticide use limitation areas (called PULAs), users must follow the precautions according to the bulletin.

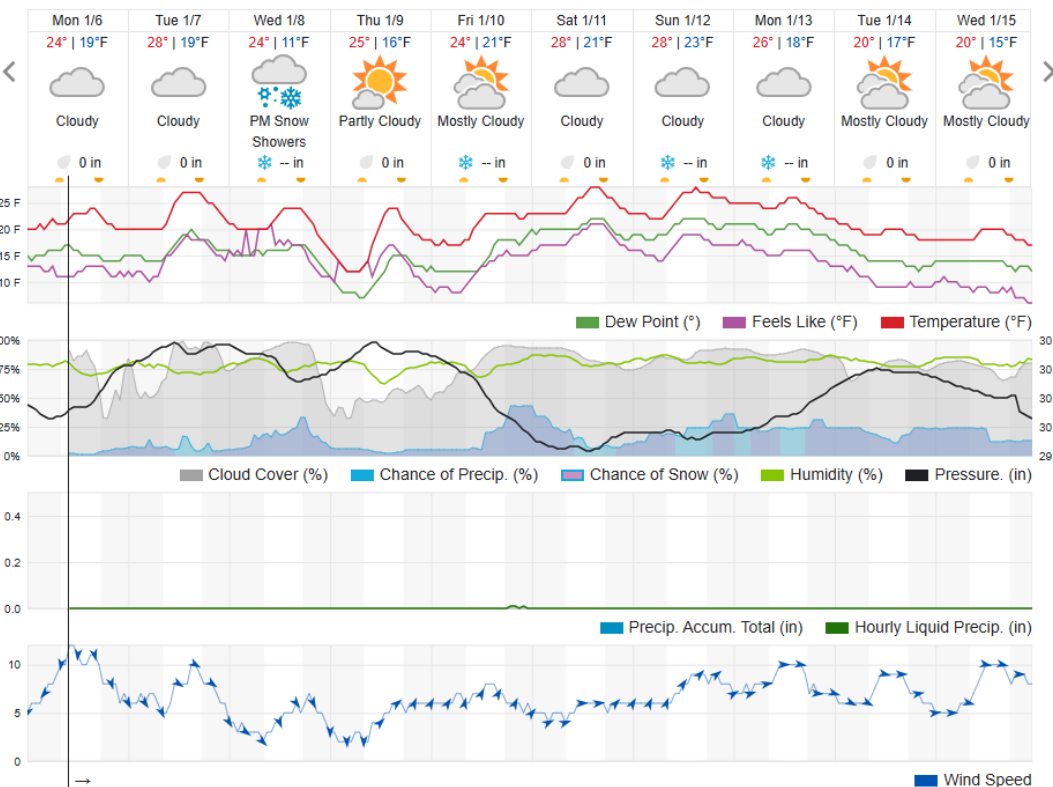
Checking the website is easy, but overall the process can be inconvenient because you have to check within 6 months of application, the website only recognizes EPA registration numbers for specific products (so you can't search by trade name or active ingredient yet), and more. HOWEVER, using Bulletins Live! Two allows us to keep more products in circulation rather than pulling them due to potential endangered species risk. So check before you apply! If you have questions about this process or Bulletins Live! Two, reach out to me (269-858-8739 or [ritchi67@msu.edu](mailto:ritchi67@msu.edu)) or other MSU Extension educators. We will have a booth at Great Lakes Crop Summit focused on this topic, so stop by and learn more.

# Southwest Michigan Field Crops Update – January 2025 - 4

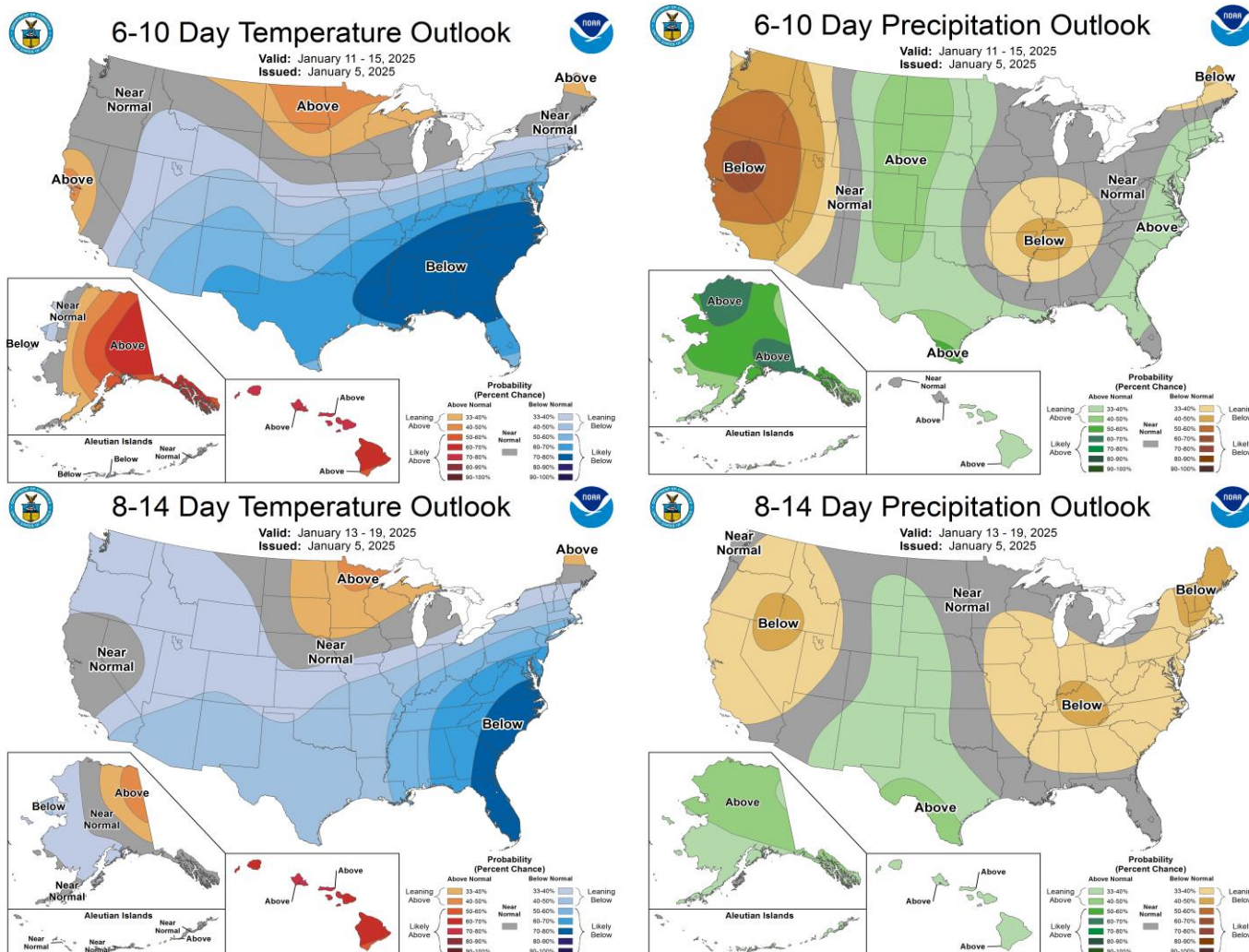


## Weather Update

Temperatures have steadily lowered, and more snow has accumulated in the past couple weeks. Farther from the lake, most of the snow has blown around but not increased too much. Areas closer to Lake Michigan saw plenty of snowfall at the end of December into early January. This next week is forecast to be cloudy and dry for the most part with highs in the low to mid 20s. Unlike at this time in 2024, the ground in most areas has actually frozen, so hopefully that translates to fewer pest pressures in the 2025 season.



Ten-day weather forecast for Kalamazoo according to wunderground.com.



The 6-10 day (Jan 11-15, top) and 8-14 day (Jan 13-19, bottom) outlooks for temperature (left) and precipitation (right).

## Calendar

[Note: Titles are clickable links to online content when highlighted and underlined.]

**Jan 7-8, 2025 MABA Winter Conference.** Lansing, MI. Michigan Agri-Business Association conference and tradeshow.

**Jan 9-10 Ohio Organic Grains Conference.** Kalahari Resorts & Conventions, 7000 Kalahari Drive, Sandusky, OH. Registration by Dec 6 is \$140, after Dec 6 is \$175, includes 2 days of programming, meals, materials and access to all exhibitors/sponsors.

**Jan 10 Purdue's Top Farmer Conference.** 8am-4pm. Beck Agricultural Center, 4550 US-52, West Lafayette, IN or online. Surrounded by farm management, farm policy, agricultural finance and marketing experts, and a group of your peers, the conference will stimulate your thinking about agriculture's future and how you can position your farm to be successful in the years ahead. Cost is \$150 regardless of format, register online.

**Jan 13 Pesticide Applicator Core Review and MDARD Core Testing.** 8am-5pm. Allegan County Human Services, Allegan. Cost is \$25 for morning training payable to MSU, cost for testing dependent on license type. Morning training session is required before afternoon testing, only core and standards exams (no commercial categories) offered. Other locations and dates available. Register online. **4 RUP**

## Southwest Michigan Field Crops Update – January 2025 - 6

- Jan 15** [Pine Ridge Farm Services Winter Meeting.](#) 7am-3pm. Rouch World Event Center, Sturgis, MI.
- Jan 21** [Michigan Soybean On-farm Research Program Update.](#) 8:30am – 1pm. GreenMark Equipment, Three Rivers. 9am – 1pm. Results of the 2024 soybean on-farm research projects will be presented. Participants will also learn about historical climate trends that are impacting our growing season in Michigan. Lunch provided by the Michigan Soybean Committee. Cost is free. **2 RUP**
- Jan 21** [2025 Farm Bill Commodity Program #1 - Farm Policy and Risk Management Series.](#) 1:00 pm- 2:30 pm. These sessions will help agricultural producers explore their options for 2025 Farm Bill commodity programs. Online via Zoom. *Note: these sessions are contingent on existence of commodity programs based on passage of a new Farm Bill or extension of the 2018 Farm Bill.*
- Jan 22** [Michigan Manure Summit.](#) 9:30am – 4pm. Okemos. Updates on the science and best practices of manure management. Cost for farms and for-hire manure application firms: \$50 for one person or \$20/person for multiple. Non-farm or for-hire manure applicators: \$100 for one person or \$75/person for multiple. Lunch provided.
- Jan 24, 31** [Planning for Profit: Marketing and Production Budget Workshop.](#) 9am-3pm. Kalamazoo Valley Community College Culinary and Allied Health Building Room CAH223, 418 E. Walnut Street, Kalamazoo. Learn tools to maximize your profit by choosing the crop and market mix that works best for your farm.
- Jan 29-30** [Great Lakes Crop Summit.](#) 9am-3pm. Soaring Eagle Casino and Hotel, Mt. Pleasant.
- Feb 5** [2025 SW MI Crop and Pest Management Update.](#) 9:00 am- 3:00 pm. Dowagiac Conservation Club, 54551 M-51 North, Dowagiac, MI 49047. Hear MSU Extension specialists present the latest recommendations for managing weeds, diseases, insects, and nematodes and receive a copy of the updated bulletin E-434 "Weed Control Guide for Field Crops". Cost: \$40. **3 RUP, 3.5 CCA**
- Feb 11** [2025 Farm Bill Commodity Program #2 - Farm Policy and Risk Management Series.](#) 6:30 pm - 8:00 pm. These sessions will help agricultural producers explore their options for 2025 Farm Bill commodity programs. Online via Zoom. *Note: these sessions are contingent on existence of commodity programs based on passage of a new Farm Bill or extension of the 2018 Farm Bill.*
- Feb 17** [Branch County Farmers Day Educational Sessions.](#) 8am-12pm. Branch Area Career Center, Coldwater. These sessions will focus on different aspects of field crops management. **Up to 3 RUP credits available**
- Feb 17** [Pesticide Applicator Core Review and MDARD Core Testing.](#) 8am-5pm. Branch Area Career Center, Coldwater. Cost is \$25 for morning training payable to MSU, cost for testing dependent on license type. Morning training session is required before afternoon testing, only core and standards exams (no commercial categories) offered. Other locations and dates available. Register online. **4 RUP**
- Mar 4-6** [2025 Drainage Workshop.](#) Farall Ag Engineering Hall, East Lansing. Understand drainage with user-friendly online tools and hands-on exercises. Learn to make contour maps with the QGIS free user-friendly software and export the contours to your GPS design and machine software. View a live demonstration of properly connecting a lateral to a main pipe. And more! Cost is \$210 by Feb 10 or \$300 after.
- Mar 5** [Michiana Irrigated Corn and Soybean Conference.](#) 8am-4pm. Elkhart County Fairgrounds, Elkhart, IN. More details to come.
- Mar 6** [MI Ag Ideas Field Crops Sessions.](#) 8am-12pm. Online via Zoom. Join us for field sleuthing stories and crop diagnostics. Spoiler: not all mysteries can be solved. Free.

## MSU Extension Digest Briefs

### LOS PRODUCTORES DE CULTIVOS ESPECIALES TIENEN CASI ASEGURADO LOS INGRESOS SI SOLICITAN PRONTO EL PROGRAMA DE ASISTENCIA A LA COMERCIALIZACIÓN DE CULTIVOS ESPECIALIZADOS

**PUBLICADO EL 23 DE DICIEMBRE, 2024**

Presente su solicitud en la oficina local de la Agencia de Servicios Agrícolas antes del 8 de enero de 2025.

### MSU EXTENSION TO HOLD DISCUSSION ON 2025 FARM BILL COMMODITY PROGRAM DECISIONS

**PUBLISHED ON DECEMBER 23, 2024**

Webinar series will help farmers choose which Farm Bill commodity program best fits their farm.

### FARM RECORDS BOOK FOR MANAGEMENT

**PUBLISHED ON DECEMBER 20, 2024**

This is the most recent update of the MSU Farm Records Book for Management booklet to help farmers keep accounting records by hand. While its paper version continues to be available for sale, both at local MSU Extension offices and online through the [MSU Bookstore](#), it is also available for free online, to be either printed at home by clicking the download link above or used as a spreadsheet.

### FARM RECORDS BOOK FOR MANAGEMENT SPREADSHEET

**PUBLISHED ON DECEMBER 20, 2024**

This is the Excel spreadsheet version of the MSU Farm Records Book for Management booklet. Free online.

### FARM FINANCIAL MANAGEMENT – GETTING STARTED

**PUBLISHED ON DECEMBER 20, 2024**

Beginning farmers should manage their finances to strive for profitability. Implementing a good accounting system and developing beginning and end of year balance sheets is an important start.

### LEARN MORE ABOUT THE USDA VALUE-ADDED PRODUCER GRANT PROGRAM WEBINAR IN JANUARY 2025

**PUBLISHED ON DECEMBER 20, 2024**

Find out if this grant opportunity is a fit for your value-added farm business.

### MSU EXTENSION TO HOST RESTRICTED USE PESTICIDE REVIEW AND TESTING JANUARY 21 AT GREAT LAKES TRADE EXPO

**PUBLISHED ON DECEMBER 17, 2024**

MSU Extension, in partnership with MSU Pesticide Safety Education Program and MDARD, will host a restricted use pesticide (RUP) review and testing at the 2025 Great Lakes Trade Expo. RUP credits are available.

### 2025 WEED CONTROL GUIDE FOR FIELD CROPS

**PUBLISHED ON DECEMBER 16, 2024**

This publication is a guide in assisting field crop growers in the selection of weed control tools for the coming growing season. This product is available in hard copy.

### YOUR VOICE MATTERS: HOW FARMERS CAN SHAPE THE FUTURE OF AGRABILITY

**PUBLISHED ON DECEMBER 16, 2024**

The Quality of Life Survey evaluates the effectiveness of the AgrAbility project nationally, and shows that participants have a higher quality of life than those who do not work with AgrAbility.

### WHAT ARE TARIFFS AND HOW COULD THEY IMPACT FARM PRICES?

**PUBLISHED ON DECEMBER 16, 2024**

A review of potential tariff impacts on input purchasing decisions.

### NEED HELP WITH BULLETINS LIVE! TWO?

**PUBLISHED ON DECEMBER 16, 2024**

MSU Extension is offering six free educational hands-on training sessions on how to use the Bulletins Live! Two system. RUP credits have been requested.

## Southwest Michigan Field Crops Update – January 2025 - 8

### FINAL CALL TO REGISTER FOR MICHIGAN SOYBEAN COMMITTEE'S ON-FARM RESEARCH UPDATE MEETINGS IN JANUARY PUBLISHED ON DECEMBER 12, 2024

Michigan Soybean Committee and MSU Extension will be hosting on-farm soybean research update meetings in a town near you—register soon to guarantee your seat and a free lunch.

### 2025 MSU CUSTOM WORK RATES REPORT PUBLISHED ON DECEMBER 10, 2024

Farmers should consider adopting solid tax planning strategies that maintains consistent taxable income across multiple years.

### 2025 MICHIGAN MANURE SUMMIT PUBLISHED ON DECEMBER 09, 2024

The Michigan Manure Summit is an annual educational event that provides updates on the science and best practices of manure management.

### FREE ONLINE COURSES ON POLLINATOR PROTECTION OFFER A RESTRICTED USE PESTICIDE (RUP) CREDIT FOR MICHIGAN CERTIFIED PESTICIDE APPLICATORS PUBLISHED ON DECEMBER 06, 2024

Pesticide applicators in Michigan can take a free, self-paced, online course on pollinator protection to earn one RUP credit in categories 1A, 1B, 1C, 2, 3A, 3B, 6, 7A, Commercial Core or Private Core.

### HIGH OLEIC SOYBEANS—STILL WORTH CONSIDERING? PUBLISHED ON DECEMBER 05, 2024

High oleic soybeans have the potential to improve human health and increase farm profits for those able to take advantage of near-term opportunities.

### MAXIMIZING SOYBEAN INCOME WITH HIGH INPUT PRICES PUBLISHED ON DECEMBER 04, 2024

Research results will help soybean producers maximize income in 2025 despite high input costs.

### RICHARD PRICE JOINS MSU EXTENSION AS A CONSERVATION SYSTEMS EDUCATOR PUBLISHED ON DECEMBER 03, 2024

Price will focus on using precision technologies to promote and benefit increased productivity and profitability in Michigan's diverse agricultural landscape.

### MICHIGAN STATE UNIVERSITY EXTENSION TO HOST PLANNING FOR PROFIT WORKSHOP FOR FARMERS PUBLISHED ON DECEMBER 03, 2024

Michigan State University Extension will host a two-day workshop focused on budgeting and marketing in order to maximize producer profit.

---

*Nicolle Ritchie*  
*Michigan State University Extension*  
*Field Crops Educator - St. Joseph County*  
*612 E. Main St., Centreville, MI 49032*  
*(269) 858-8739 (Cell)*  
*(269) 467-5510 (Extension Office)*  
[\*ritchi67@msu.edu\*](mailto:ritchi67@msu.edu)



---

Michigan State University is an affirmative action/equal opportunity employer. Michigan State University Extension programs and materials are open to all without regard to race, color, national origin, gender, gender identity, religion, age, height, weight, disability, political beliefs, sexual orientation, marital status, family status or veteran status. Issued in furtherance of MSU Extension work, acts of May 8 and June 30, 1914, in cooperation with the U.S. Department of Agriculture. Quentin Tyler, Director, MSU Extension, East Lansing, MI 48824. This information is for educational purposes only. Reference to commercial products or trade names does not imply endorsement by MSU Extension or bias against those not mentioned. The 4-H Name and Emblem have special protections from Congress, protected by code 18 USC 707.