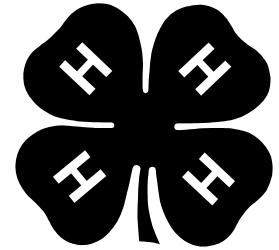


St. Joseph County

4-H Waterfowl

Evaluation Report



Exhibitors: All ages

Name: \_\_\_\_\_

4-H Club: \_\_\_\_\_

Age by Jan. 1: \_\_\_\_\_ No. Years in Poultry Project: \_\_\_\_\_

What is the 4-H Motto? \_\_\_\_\_

Reference materials are available at the St. Joseph County MSU Extension Office.

The following references are needed to complete this report:

- *Raising Waterfowl* (A3311)
- *Glossary of Poultry Terms* (EM4746)

**Note:** Members exhibiting both Market and Breeding Stock Poultry must complete **only one evaluation**. Members exhibiting more than one type of breeding stock poultry (chickens, ducks, or geese) need to complete only one breeding stock poultry evaluation for one type of bird, if he (she) chooses to do the breeding stock evaluation. Pigeon exhibitors must do another breeding evaluation of their choice, if they are only showing pigeons.

1. Define the following terms:

Bantam \_\_\_\_\_

Drake \_\_\_\_\_

Saddle \_\_\_\_\_

Down \_\_\_\_\_

Standard \_\_\_\_\_

2. How did you obtain your ducks or geese?

\_\_\_\_\_ Hatched and raised my own birds.

\_\_\_\_\_ Purchased them from a 4-H exhibitor or other poultry grower.

\_\_\_\_\_ Purchased from a hatchery. Name of Hatchery: \_\_\_\_\_

3. What is the content of your poultry feed?

Protein \_\_\_\_\_%      Fat \_\_\_\_\_%      Fiber \_\_\_\_\_%

4. Is there medication in the feed? \_\_\_\_\_

5. How did you house your waterfowl? \_\_\_\_\_

6. What type of bedding did you use? \_\_\_\_\_

7. How old were your fowl when you obtained them? \_\_\_\_\_

8. What class and breed is your waterfowl? \_\_\_\_\_

9. How can you prevent ducks and geese from flying? \_\_\_\_\_

10. List the four classes of ducks and two breeds in each class.

Class: \_\_\_\_\_ Breeds: \_\_\_\_\_

Class: \_\_\_\_\_ Breeds: \_\_\_\_\_

Class: \_\_\_\_\_ Breeds: \_\_\_\_\_

Class: \_\_\_\_\_ Breeds: \_\_\_\_\_

11. What can cause matted eyes? \_\_\_\_\_

12. List the three classes of geese and two breeds in each class:

Class: \_\_\_\_\_ Breeds: \_\_\_\_\_

Class: \_\_\_\_\_ Breeds: \_\_\_\_\_

Class: \_\_\_\_\_ Breeds: \_\_\_\_\_

13. What class and breed is your waterfowl? \_\_\_\_\_

14. What is the incubation period for your breed of ducks or geese? \_\_\_\_\_

15. How old should young waterfowl be before they are allowed to swim, and why?

\_\_\_\_\_

**Project Expenses**

Date chickens obtained: \_\_\_\_\_

**Current Expenses**  
(expenses for this year only)

**Long Term Expenses**  
(things you'll have for following years)

Cost of birds: \_\_\_\_\_

Cages: \_\_\_\_\_

Feed Costs: \_\_\_\_\_

Feeders/Waterers: \_\_\_\_\_

Medicine/Vet: \_\_\_\_\_

Other Expenses: \_\_\_\_\_

Bedding: \_\_\_\_\_

Misc. Expenses: \_\_\_\_\_

**Total Current Expenses:** \_\_\_\_\_

**Total Long Term Expenses:** \_\_\_\_\_

Number of Live Birds: \_\_\_\_\_

**Cost per bird: \*** \_\_\_\_\_

\* = divide Total Current Expenses by number of live birds.

16. Did you have any problems raising your birds? (diseases, wild animals, heat, cold)

Explain: \_\_\_\_\_

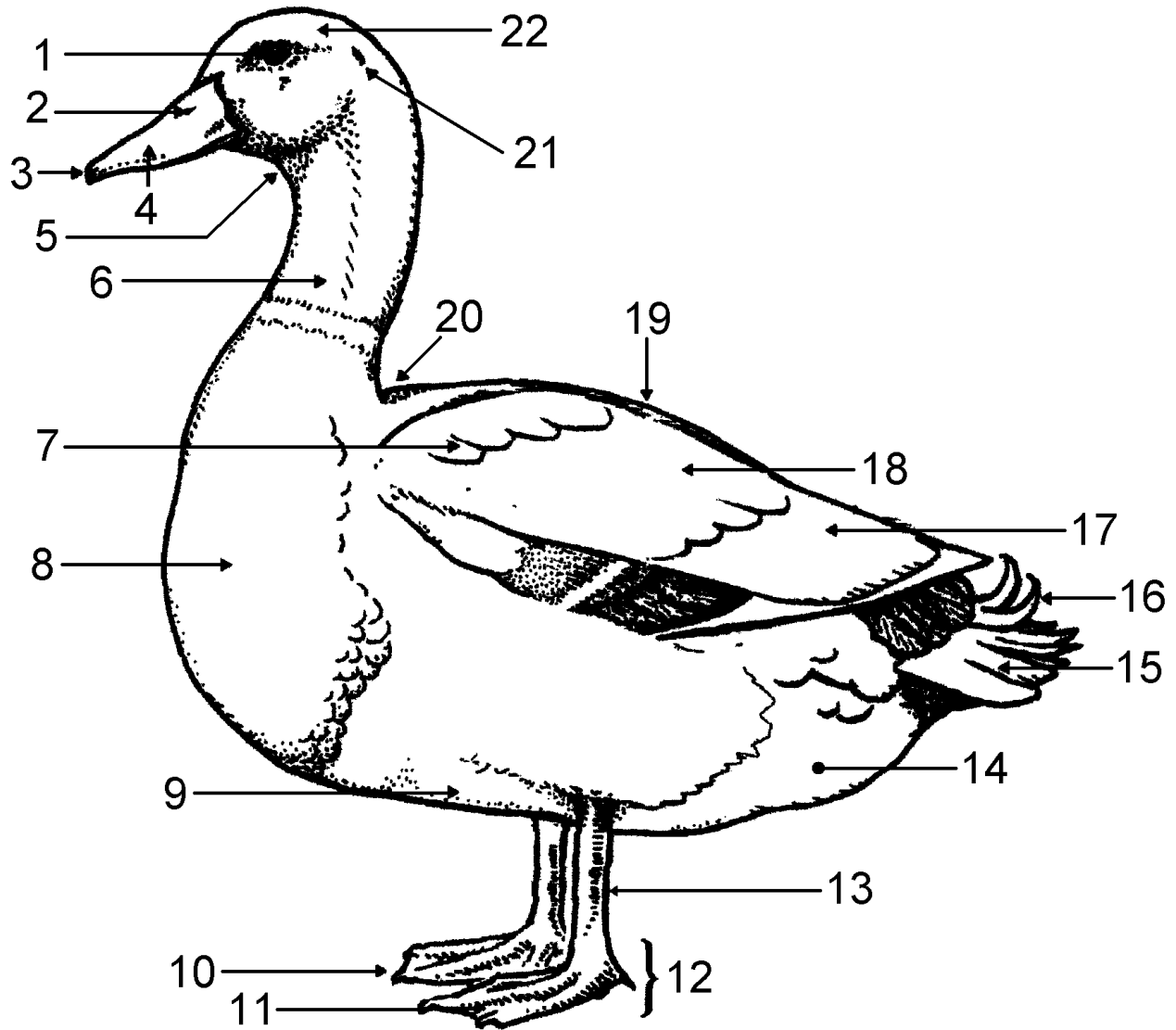
\_\_\_\_\_

\_\_\_\_\_

17. Is there anything you will do different next year? \_\_\_\_\_

\_\_\_\_\_

**Identify Parts of a Duck**  
(Place number on line by part)

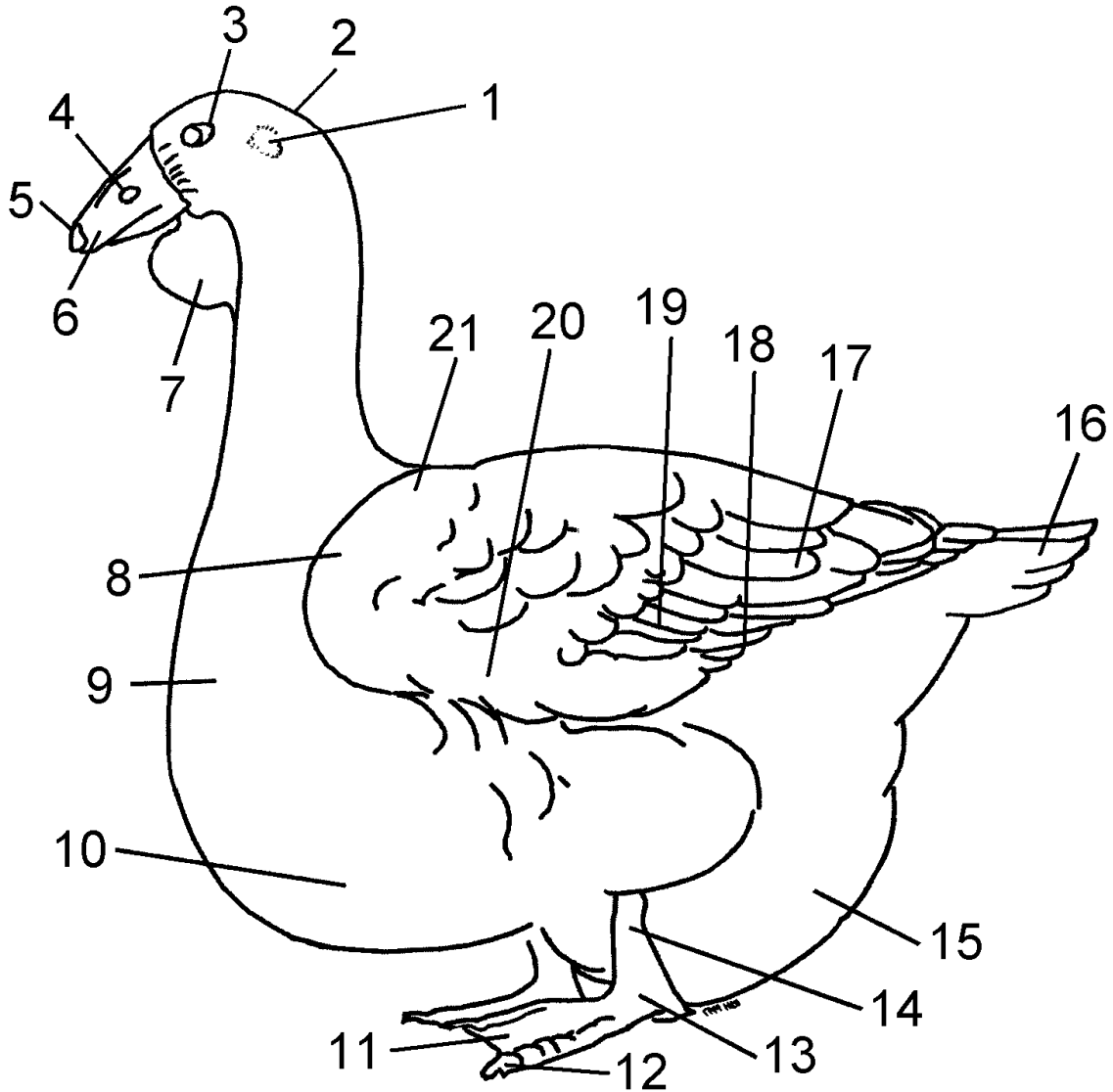


- \_\_\_\_\_ Bean
- \_\_\_\_\_ Bill
- \_\_\_\_\_ Breast
- \_\_\_\_\_ Cape
- \_\_\_\_\_ Drake Feathers
- \_\_\_\_\_ Ear
- \_\_\_\_\_ Eye
- \_\_\_\_\_ Fluff

- \_\_\_\_\_ Foot
- \_\_\_\_\_ Head
- \_\_\_\_\_ Keel
- \_\_\_\_\_ Neck
- \_\_\_\_\_ Nostril
- \_\_\_\_\_ Primaries
- \_\_\_\_\_ Saddle

- \_\_\_\_\_ Secondaries
- \_\_\_\_\_ Shank
- \_\_\_\_\_ Tail
- \_\_\_\_\_ Throat
- \_\_\_\_\_ Toe
- \_\_\_\_\_ Web
- \_\_\_\_\_ Wing Bow

**Parts of a Goose**  
(Place number on line by part)



- |       |        |       |                |       |              |
|-------|--------|-------|----------------|-------|--------------|
| _____ | Bean   | _____ | Fluff          | _____ | Shank        |
| _____ | Bill   | _____ | Foot           | _____ | Tail         |
| _____ | Breast | _____ | Head           | _____ | Toe          |
| _____ | Cape   | _____ | Keel           | _____ | Web          |
| _____ | Dewlap | _____ | Nostril        | _____ | Wing Bow     |
| _____ | Ear    | _____ | Pinion Coverts | _____ | Wing Coverts |
| _____ | Eye    | _____ | Secondaries    | _____ | Wing Front   |