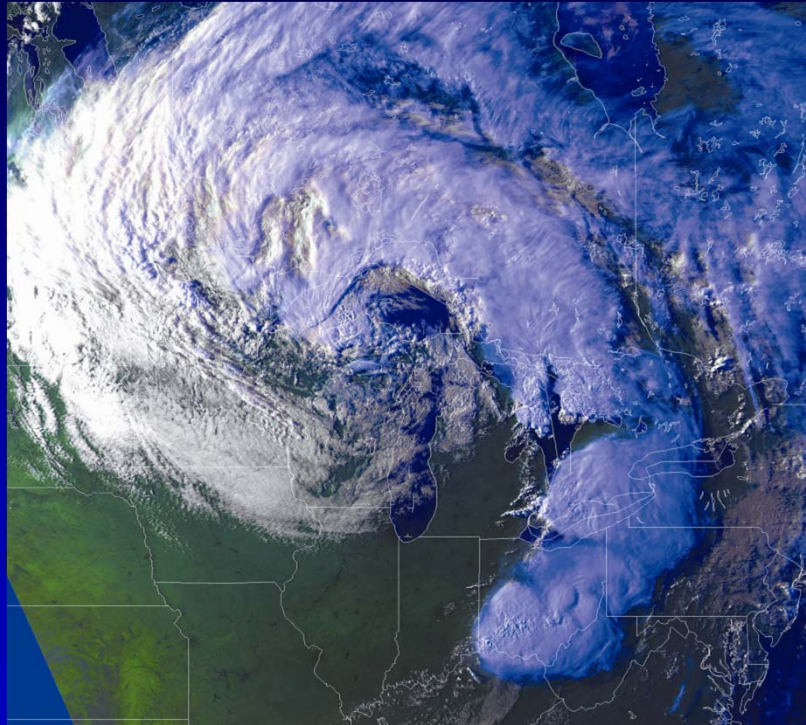


Climate Variability and Change: Basic Concepts



*Jeffrey A. Andresen
Dept. of Geography
Michigan State University*


MICHIGAN STATE
UNIVERSITY
EXTENSION

MICHIGAN STATE UNIVERSITY
AgBioResearch

Weather versus Climate

- The American Meteorological Society's Glossary of Meteorology defines **climate** as: "The slowly varying aspects of the atmosphere–hydrosphere–land surface system"
- **Weather** describes the same thing but on relatively short time scales (e.g. hours or days)
- *'Climate is what we expect, weather is what we get...'*

Some Notable Pre-Instrumental Trends in the Great Lakes Region

- Tropical humid conditions during the Carboniferous and Devonian eras. 
- Frigid, glacial/periglacial conditions as recently as 12,000 years ago during the end of the Pleistocene era.
- During early portions of the Holocene era, climate in the region warmed rapidly, resulting in a relatively mild and dry climate which lasted until about 5,000 YBP. Great Lakes levels fell until the lakes became terminal or confined about 7,900 YBP and vegetation in the region gradually transitioned from boreal to xeric species.
- Beginning about 5,000 YBP, climate cooled and precipitation totals increased, favoring the establishment of more mesic vegetation.
- During the late Holocene, the region experienced a period of relatively mild temperatures from approximately 800 A.D. to 1300 A.D. followed by a period of relatively cool temperatures from about 1400 A.D. until the late 19th Century.

The Earth's climate system is dynamic: It changes. It always has and it always will.

- So why are we concerned now?
 1. We might be responsible.
 2. We might not like the changes.
- The globe is projected to warm 1.0-4.0°C by 2100.
 - Is that a big deal?
 - Depths of the Ice Ages
 - 5-6°C colder than today.



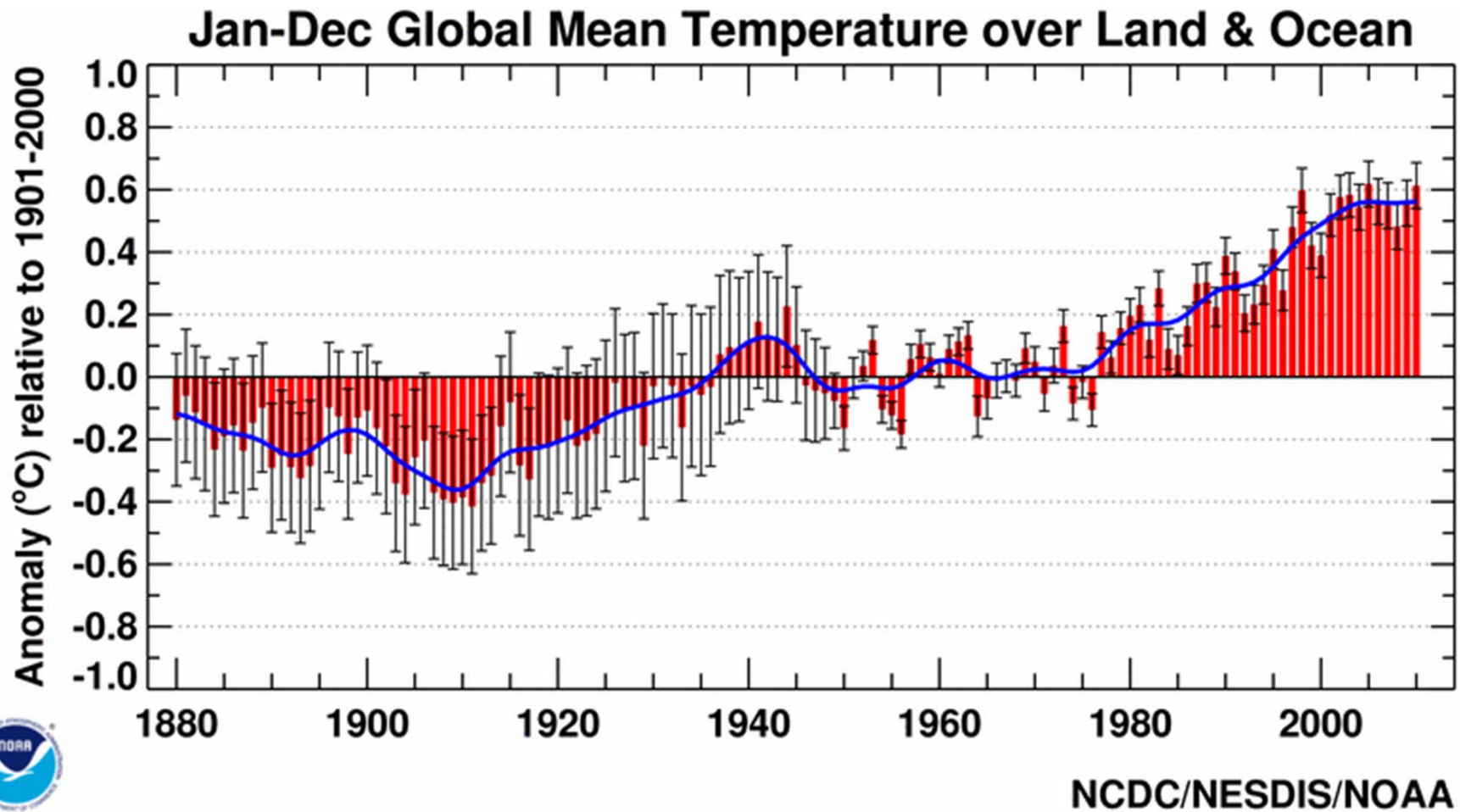
'Natural' Mechanisms and Processes Leading to Climate Change:

- Global Plate Tectonics
- Sunspots
- Variations in Earth orbit (Milankovitch Theory)
- Vulcanism (e.g. Mt. Pinatubo 1991)
- Meteor Impact (e.g. Chicxulub, K-T extinction 65M ybp)
- Periodic changes in the earth's carbon, nitrogen cycles

Anthropogenic Mechanisms and Processes Leading to Climate Change:

- Changes in atmospheric greenhouse gas concentrations
- Changes in other atmospheric gas concentrations (e.g. ozone depletion)
- Land use changes

Mean global temperatures have increased approx. 0.9°C during the past century



How can the Earth physically warm up over time?

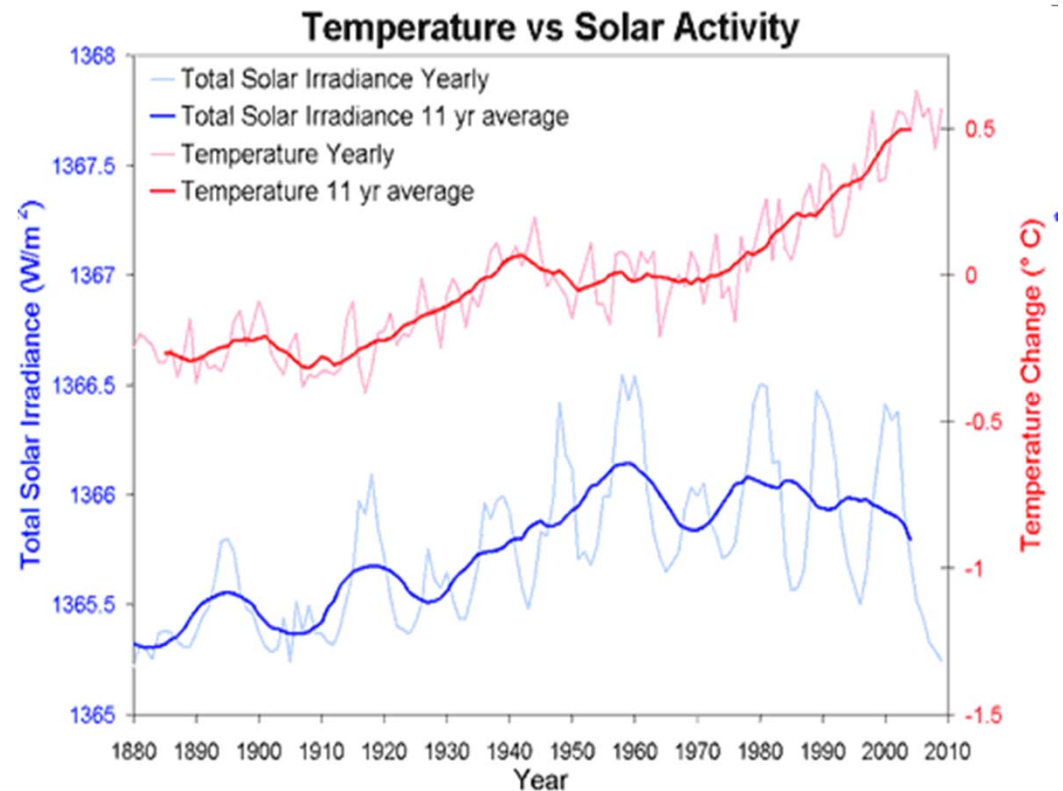
- At its simplest, long term warming of the earth's surface boils down to three possibilities.



- The Earth will warm if:
 - The Sun gets brighter
 - The Earth gets darker (less reflective)
 - The Earth cannot reradiate heat fast enough

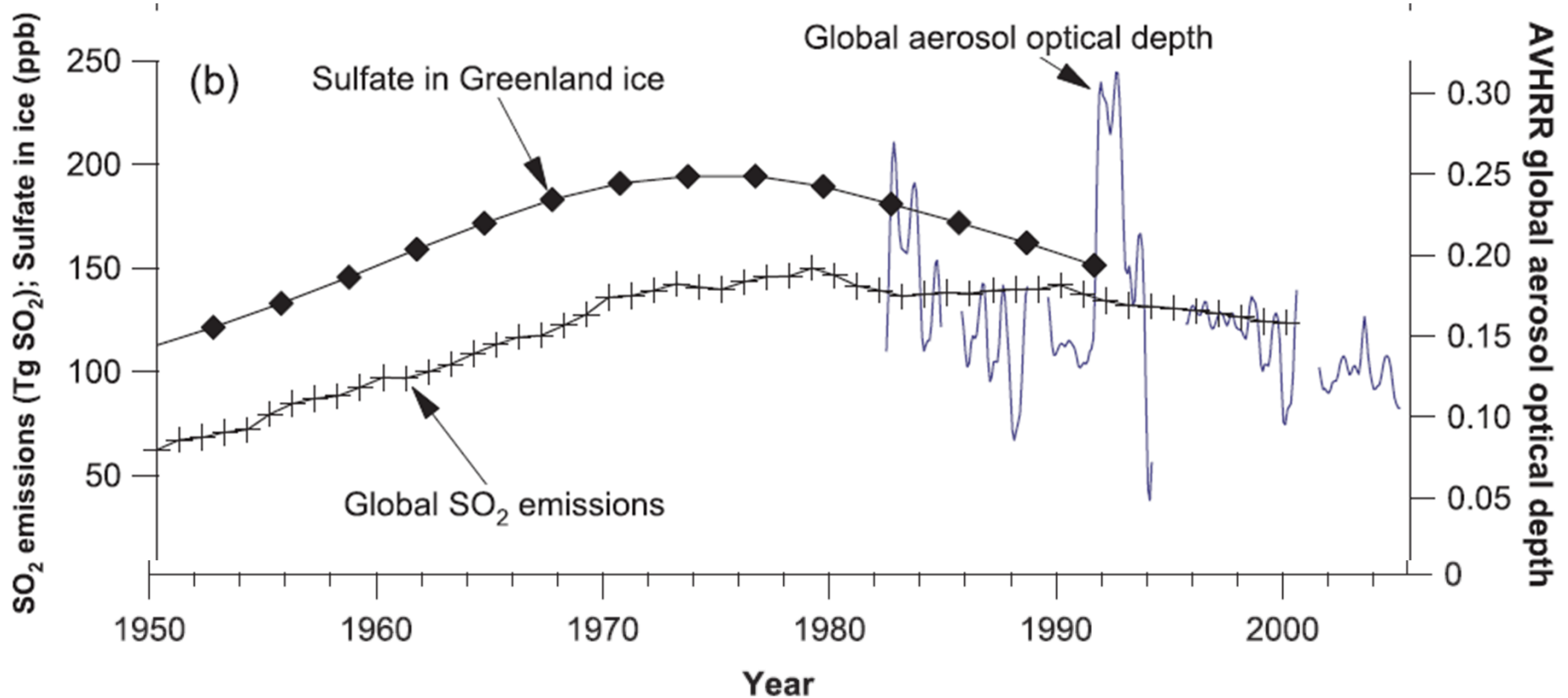
Has the Sun been getting brighter?

- In short, no.
- During the last 35 years the solar 'constant' has decreased.
- Solar cycle 24 is now beginning so we should experience roughly 0.24 W/m^2 heating by 2013



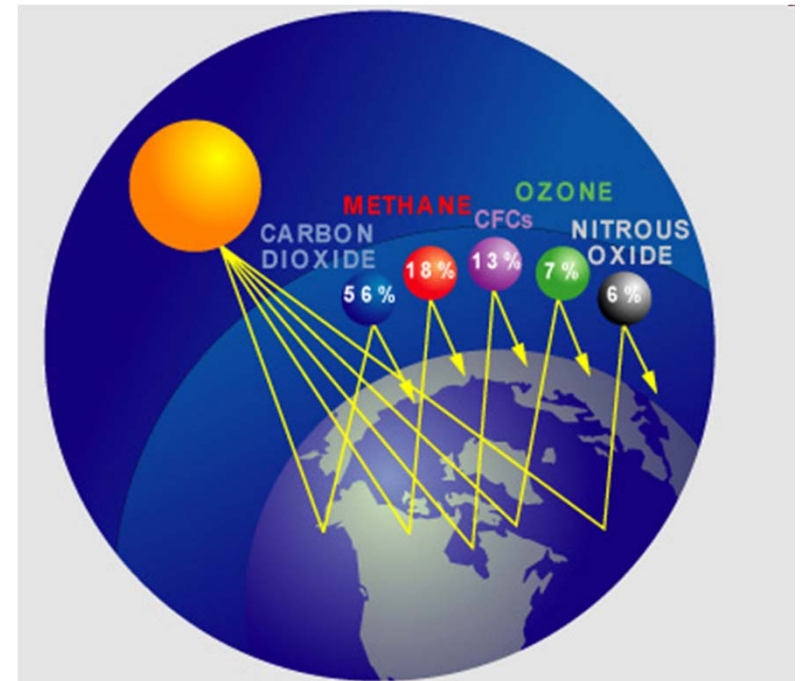
Has the Earth been getting darker?

- No. If anything, it has been brighter/more reflective.

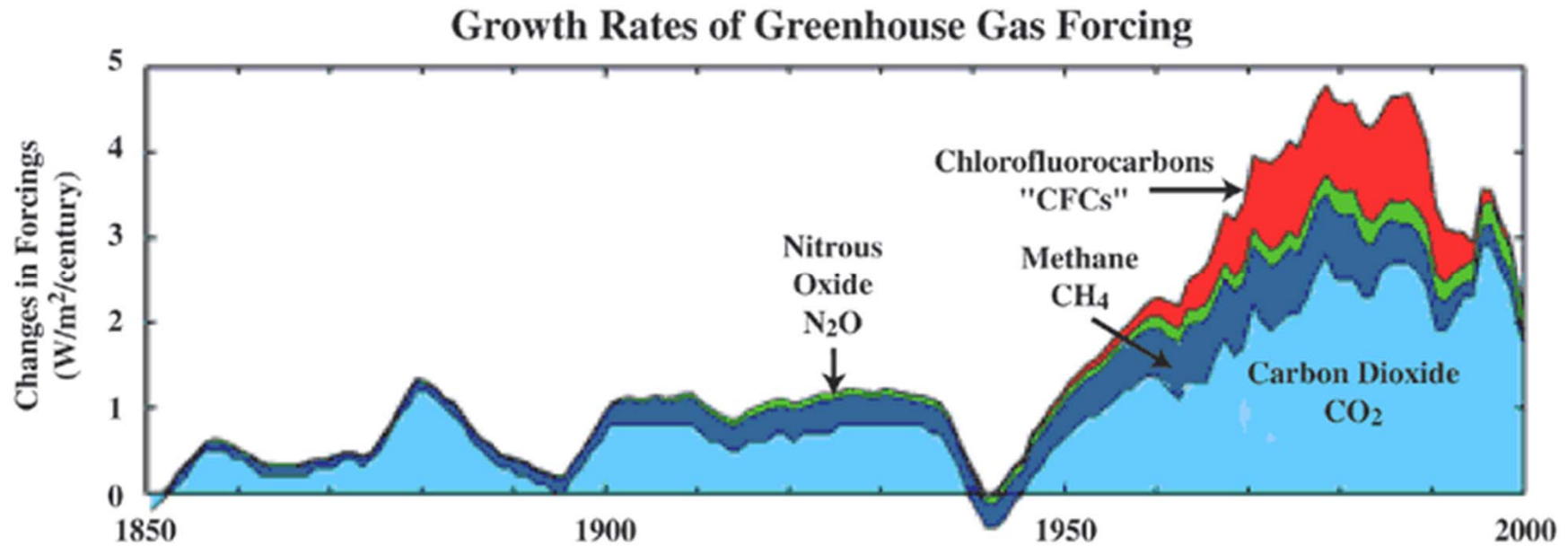


Process of elimination means...

- Something must be keeping energy (heat) from escaping like it previously did.
- That 'something' is the set of greenhouse gases, which include:
 - Carbon dioxide
 - Methane
 - Halocarbons
 - Ozone
 - Nitrous oxide



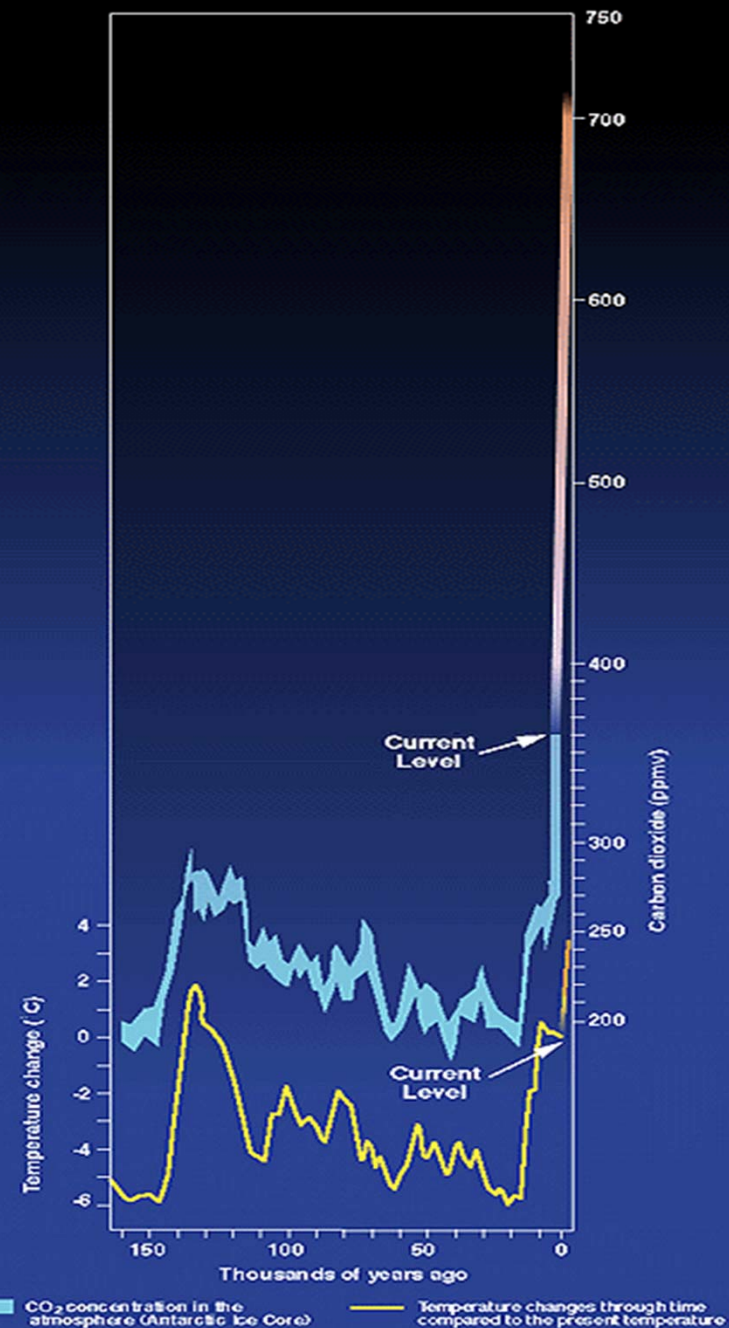
Concentrations of GHGs in the atmosphere are increasing...



*** For reference, the amount of solar energy absorbed at the top of the atmosphere averaged globally is 240 W/m^2 .

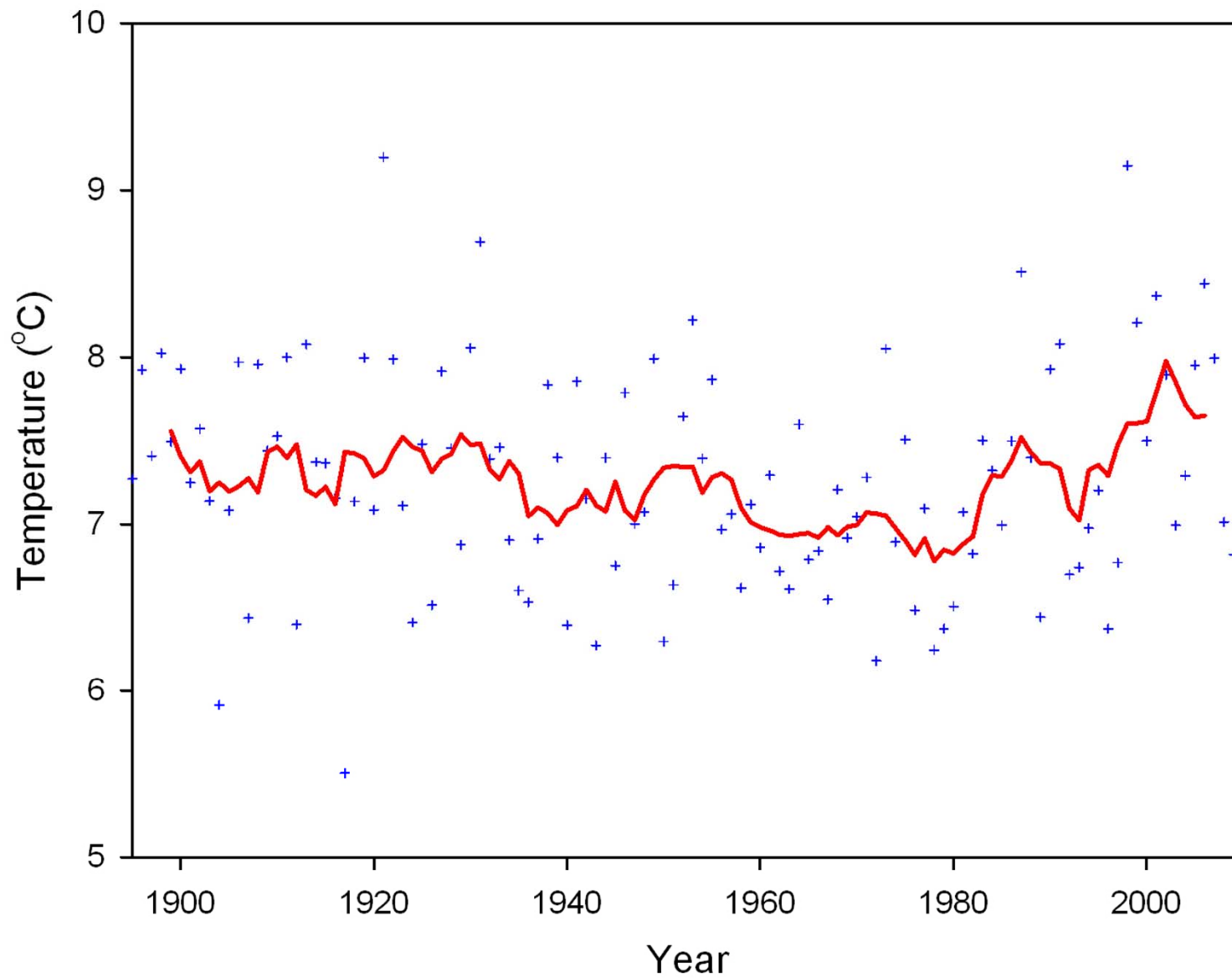
...and have been strongly correlated with temperature changes in the past.

Atmospheric Carbon Dioxide Concentration and Temperature Change



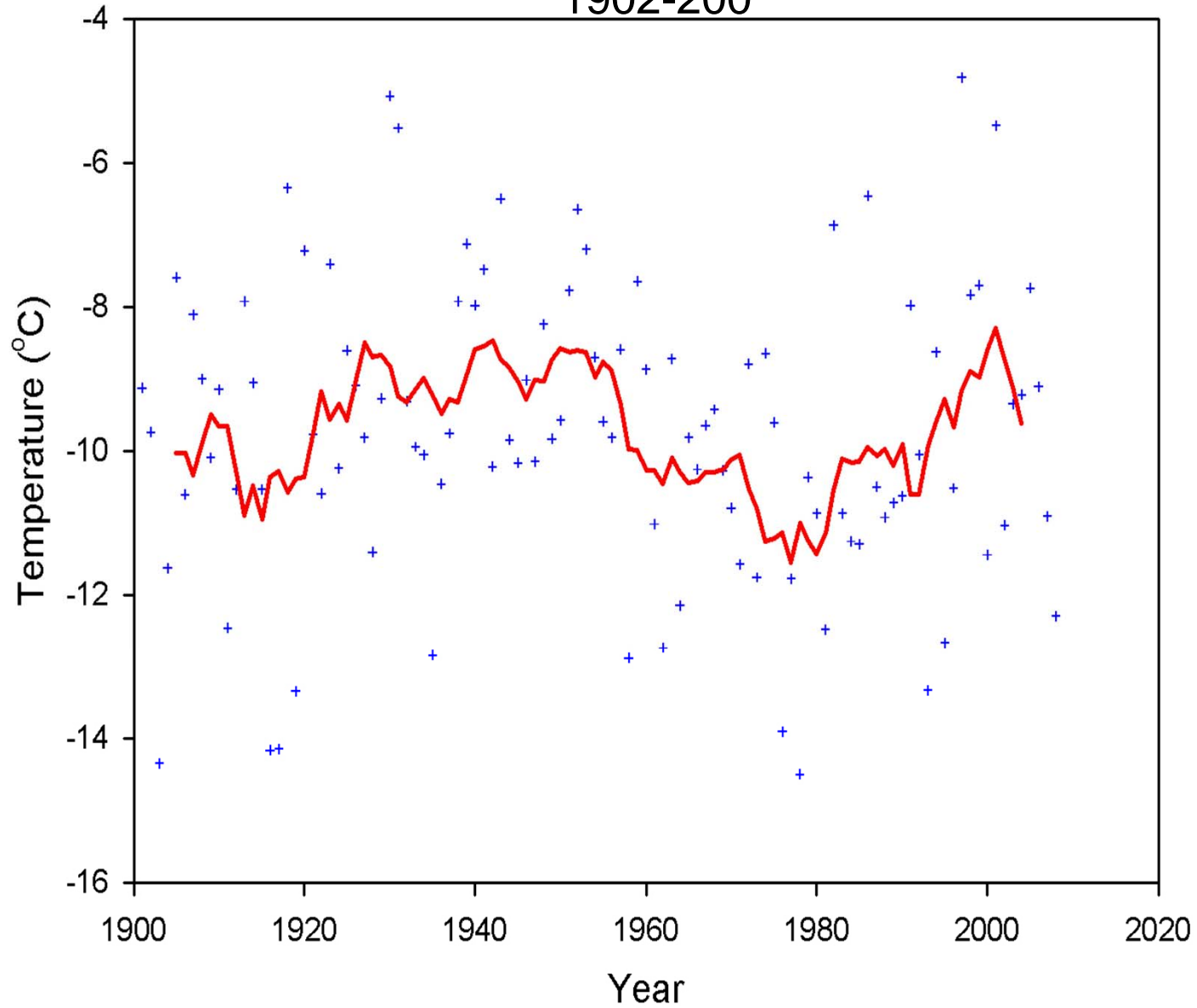
Historical Climatic Trends: Instrumental Record

Mean Temperatures vs. Year, Michigan 1895-2010

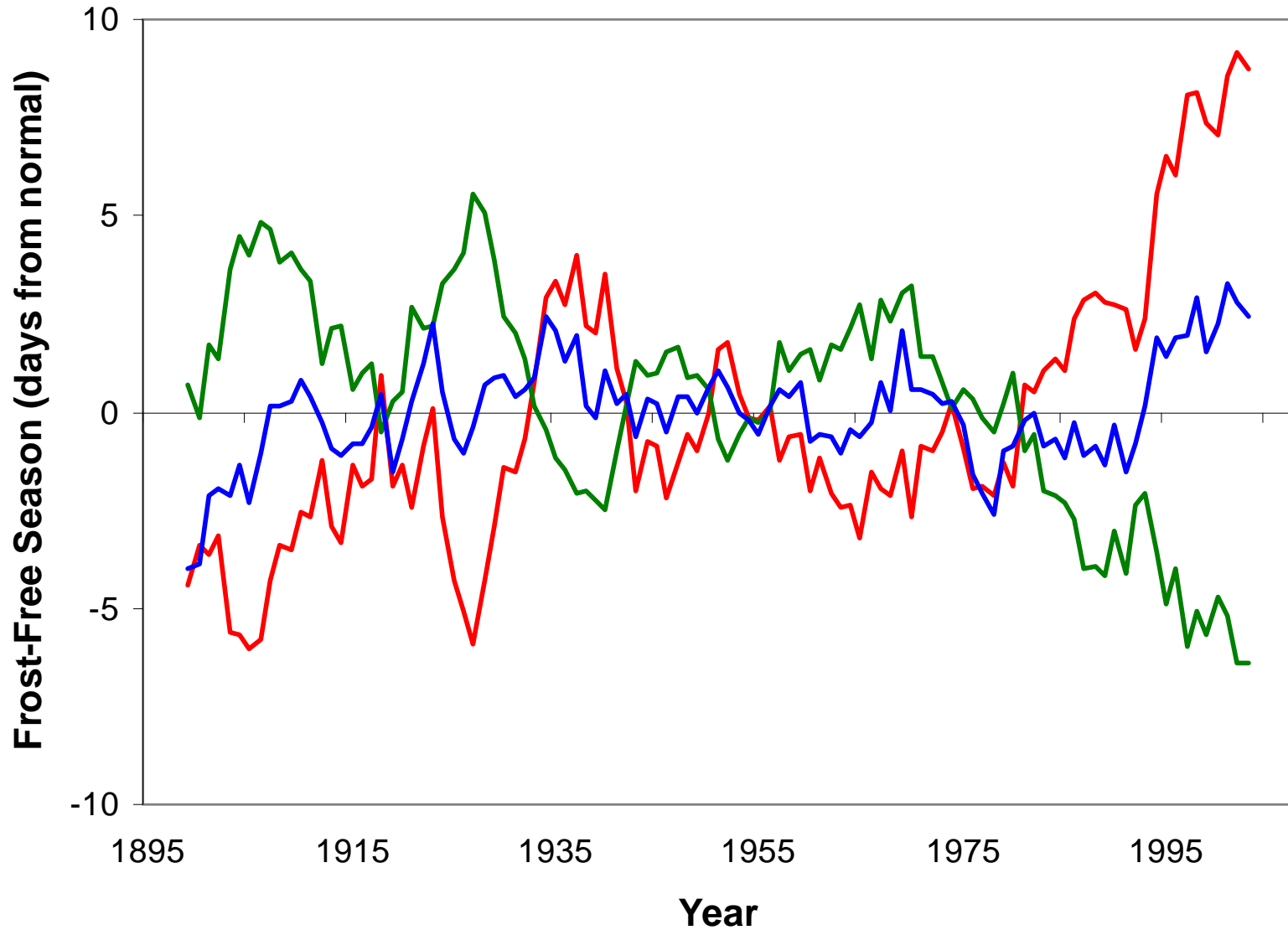


Mean Winter Temperatures vs. Year

Ironwood, MI
1902-200



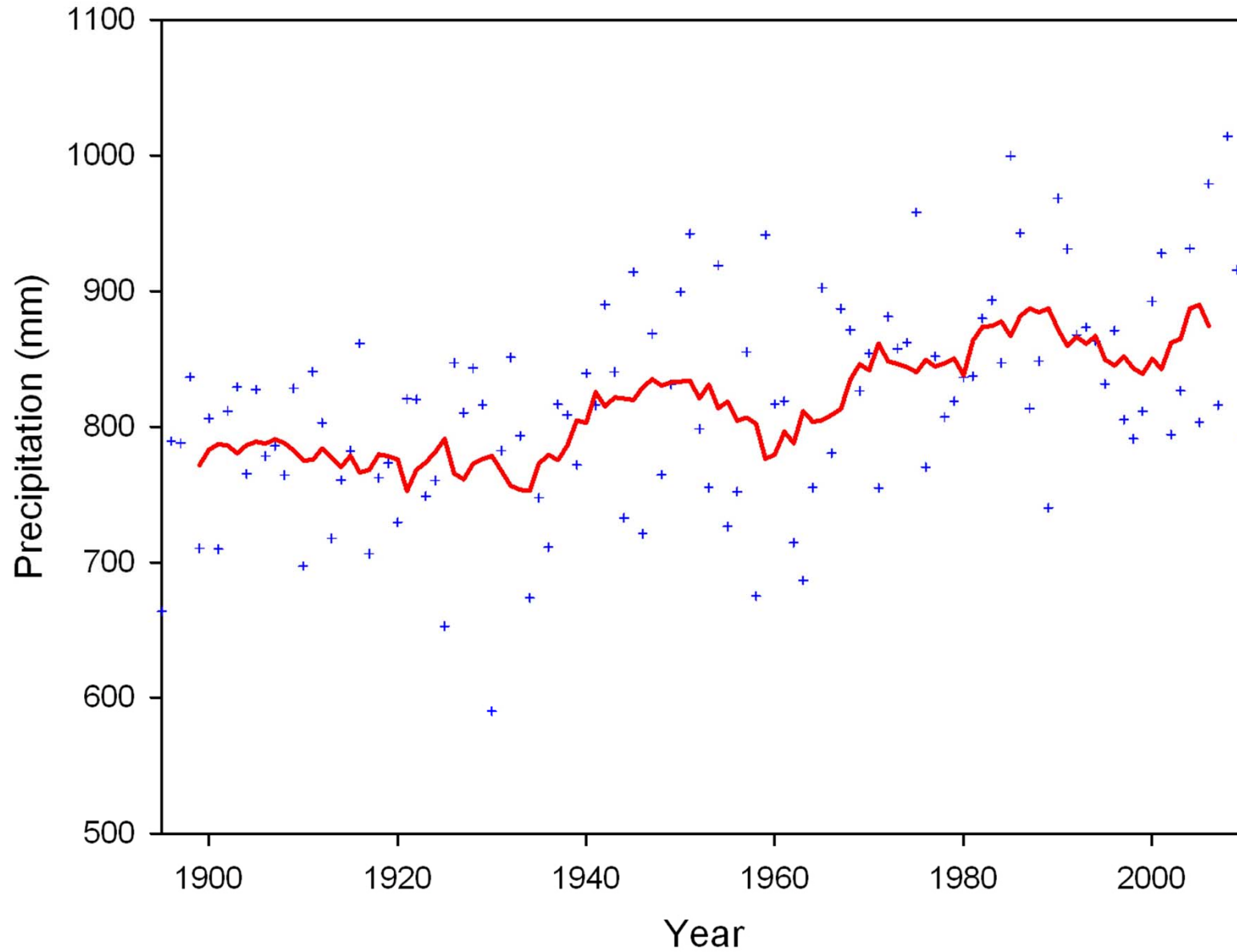
Changes in the Length of the Frost Free Season Great Lakes Region



— Length — Spring — Fall

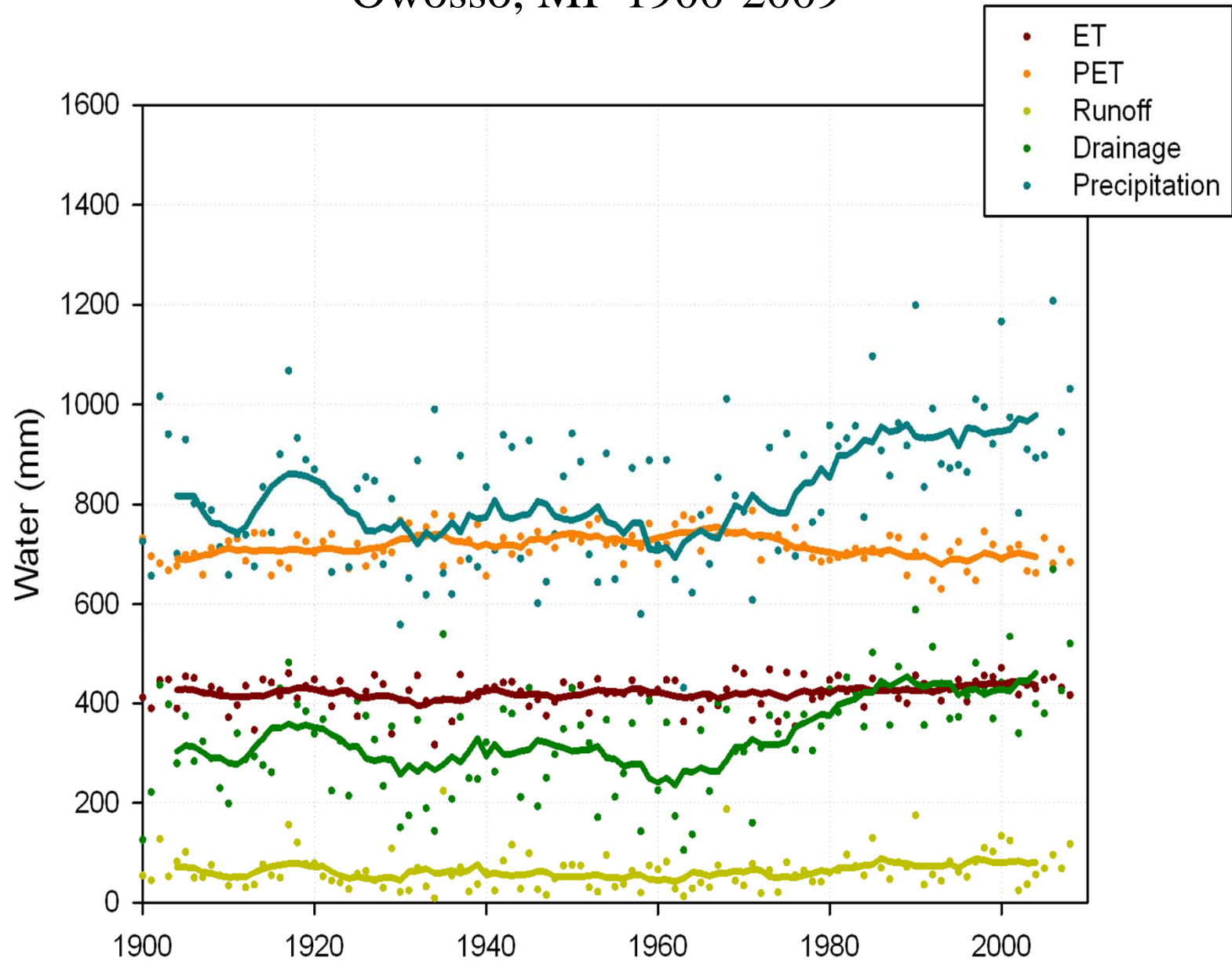
Source: K. Kunkel, Midwest. Reg. Clim. Center

Annual Precipitation vs. Year, Michigan 1895-2010



Hydrologic Variables vs. Year

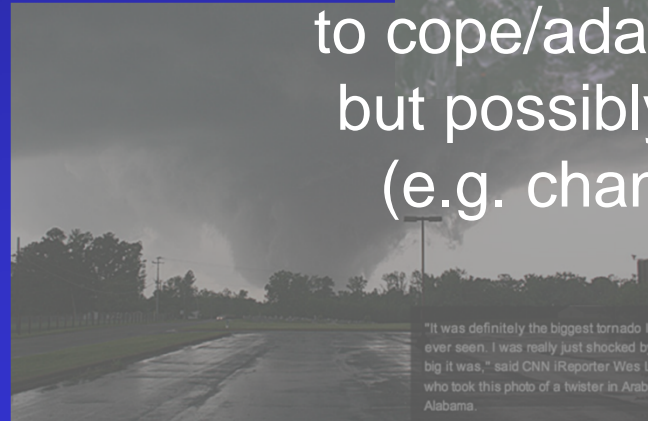
Owosso, MI 1900-2009



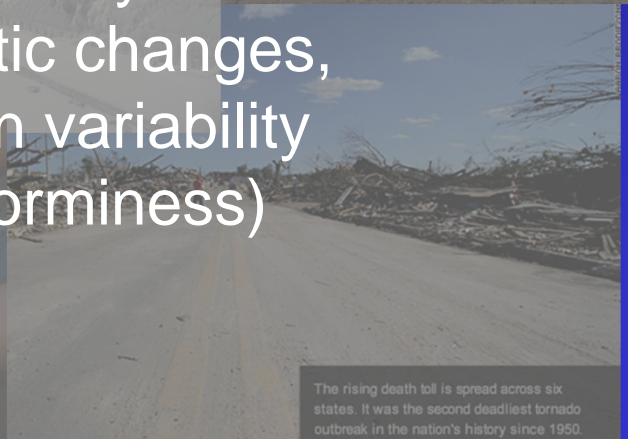
Impacts of Climatic Variability



Past history suggests that society may be able to cope/adapt with steady climatic changes, but possibly not with changes in variability (e.g. changes in extremes, storminess)

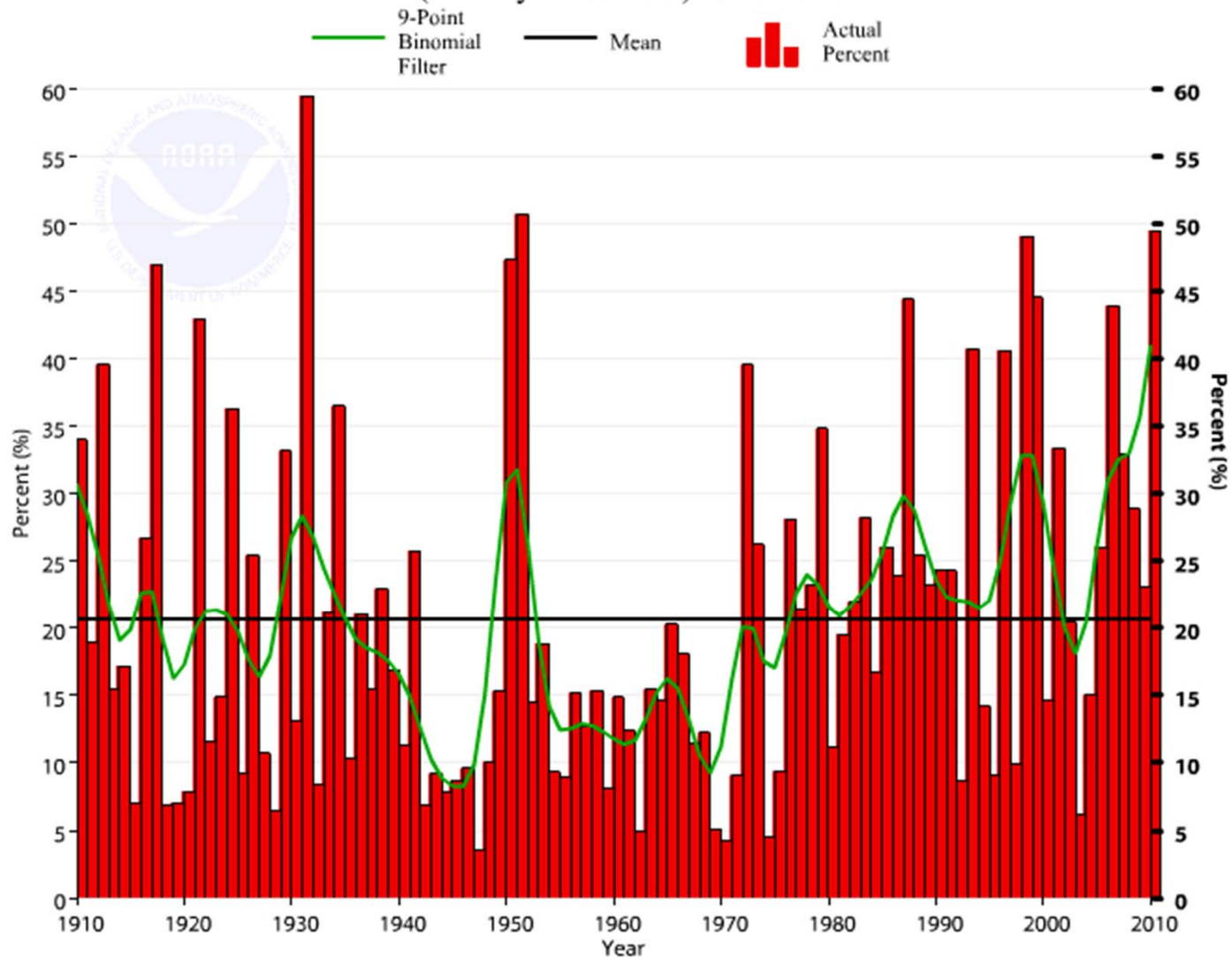


"It was definitely the biggest tornado I've ever seen. I was really just shocked by how big it was," said CNN IReporter Wes Lyon who took this photo of a twister in Arab, Alabama.



The rising death toll is spread across six states. It was the second deadliest tornado outbreak in the nation's history since 1950.

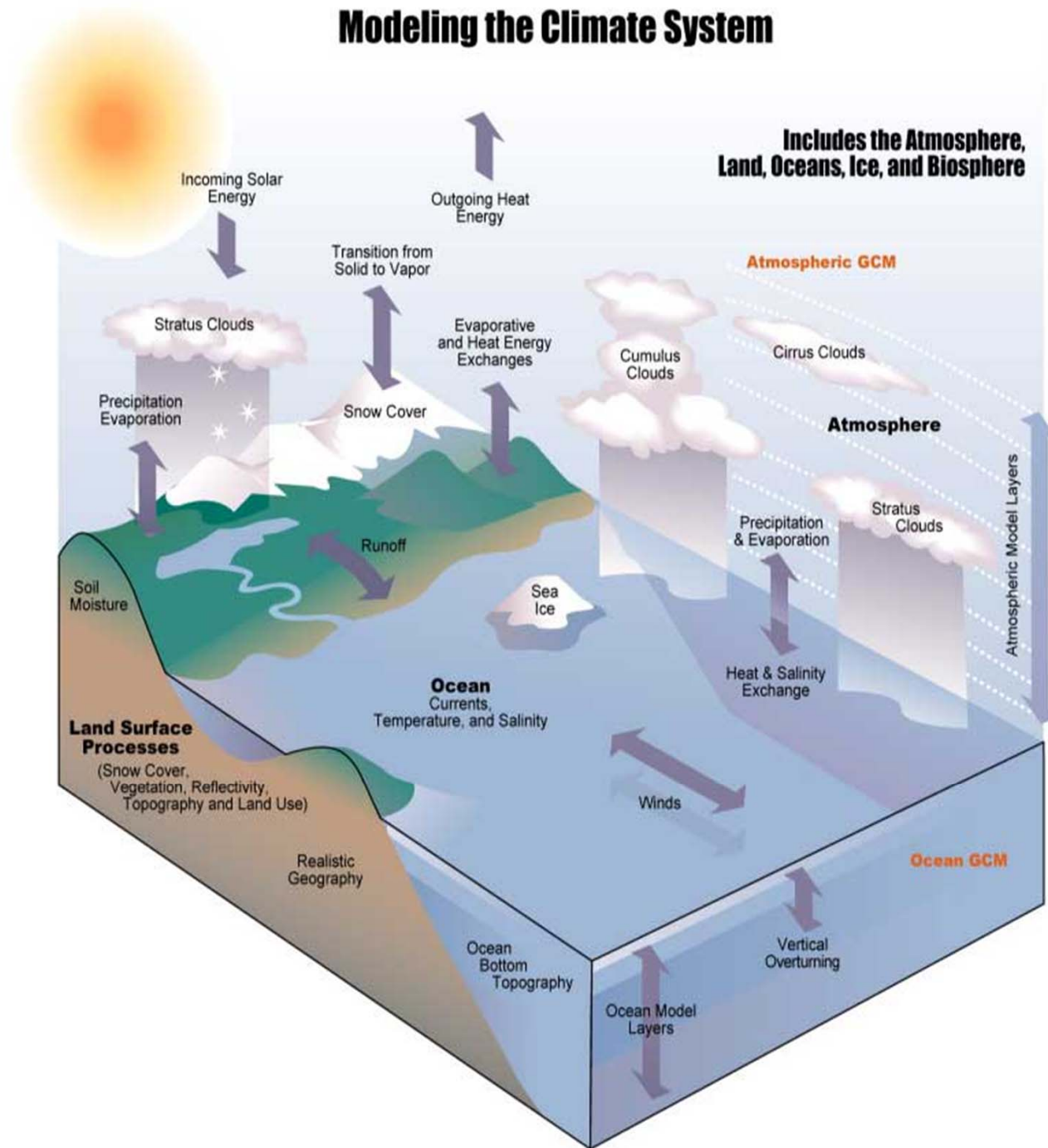
East North Central CEI (All Steps Combined) Annual (January-December) 1910-2010



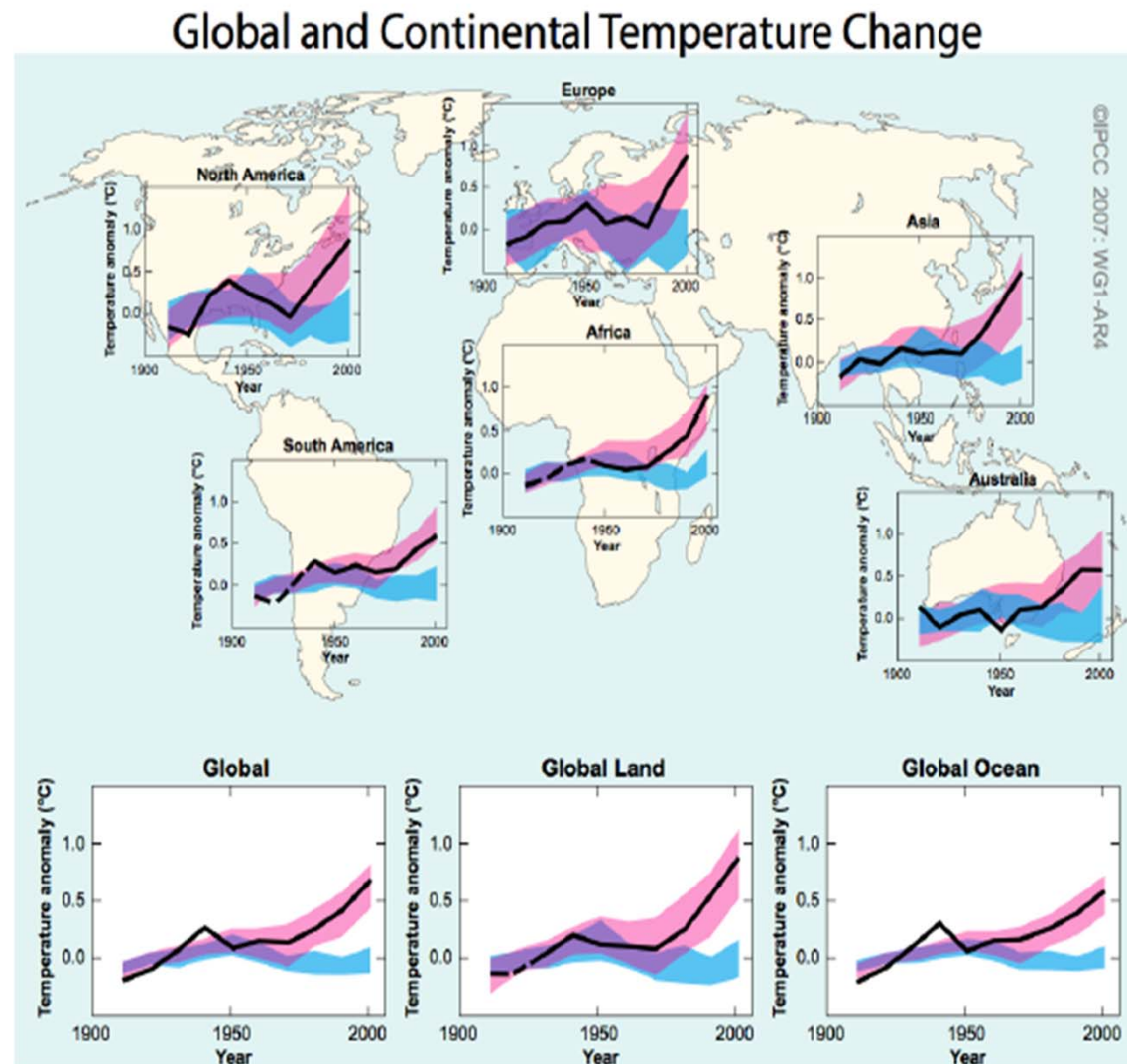
(Source: NCDC, 2011)

Projecting the Future: Global Climate Models (GCMs)

Modeling the Climate System

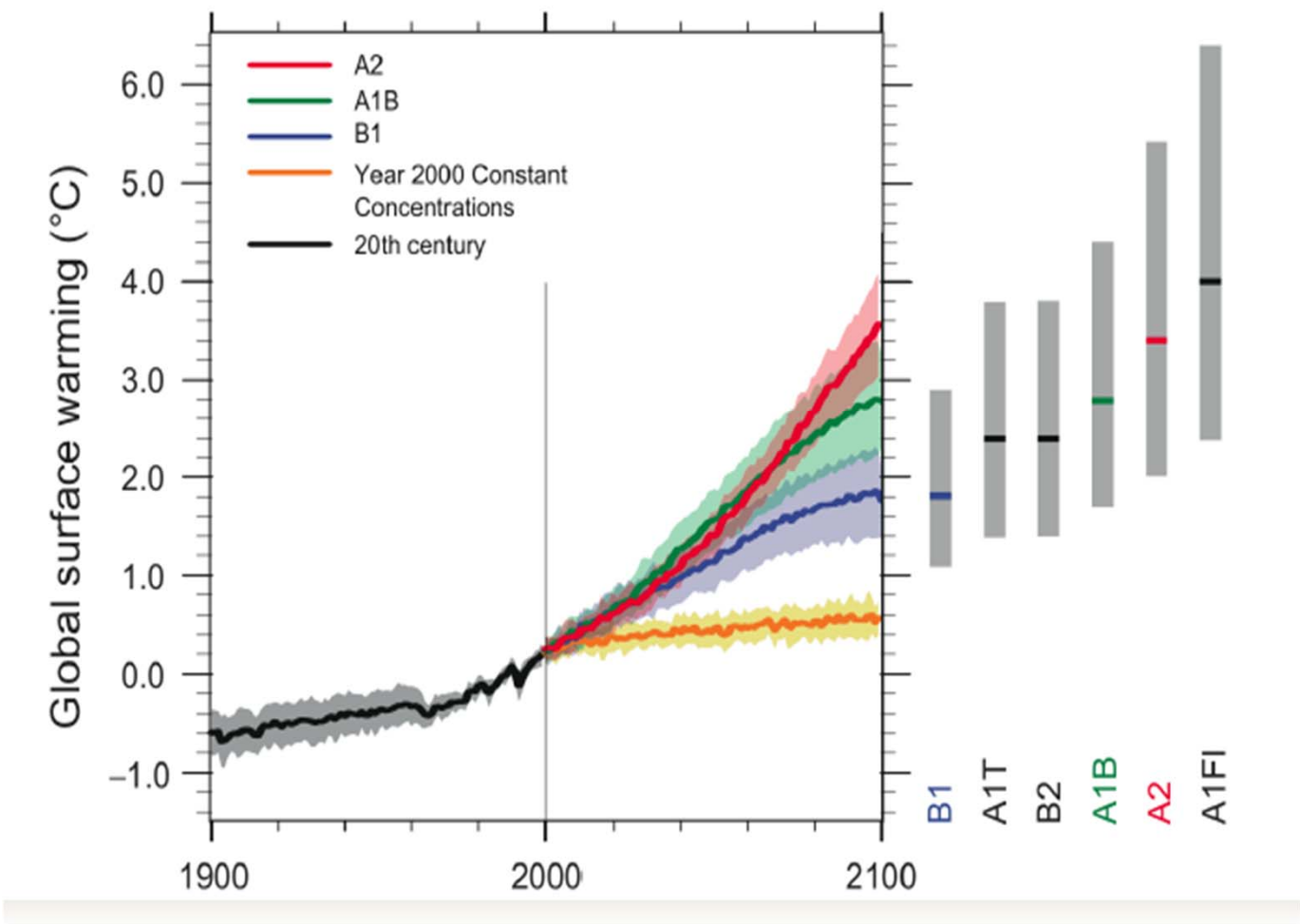


Natural Variability or Anthropogenic Signal?



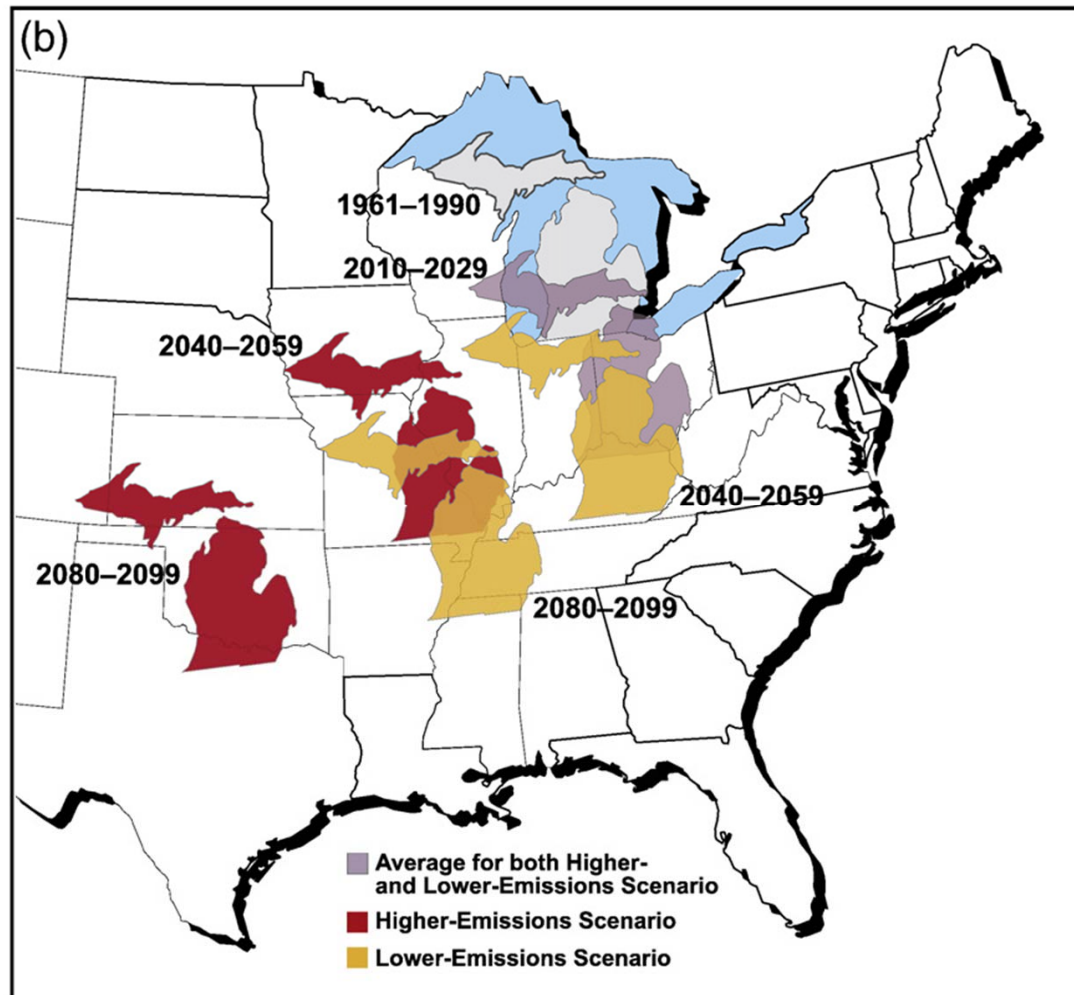
(Source: IPCC, 2007)

Multi-model Averages and Assessed Ranges for Surface Warming



Source: (IPCC, 2007)

Projected Temperature Changes



Hayhoe et al (2010)

GLISA

Strategies

- Adaptation (learn to cope, adapt)
 - New technology
 - Migration, Abandonment ('habitat tracking')
- Mitigation (reduce or solve problem)
 - Collection/Storage of carbon
 - Anthropogenic
 - Biological
 - Geoengineering

Summary

- Overall, mean average temperatures in Michigan rose approximately 1.0°F during the past century. Warming of about 2.0°F has occurred between 1980 and the present, much of it concentrated during the winter season and at night.
- Milder winter temperatures have led to less ice cover on the Great Lakes and the seasonal spring warm-up is occurring earlier than in the past.
- Annual precipitation rates increased from the 1930's through the 1990's but have leveled off recently.
- Most recent GCM simulations of the Great Lakes region suggest a warmer and wetter climate in the distant future, with much of the additional precipitation coming during the cold season months.
- Projections of future climate change in Michigan suggest a mix of beneficial and adverse impacts.
- A changing climate leads to many potential challenges for dependent human and natural systems, especially with respect to climate variability.



Questions?

